



Department of Veterans Affairs

Maternity Tracker (MT) Project

Installation Manual 2012 (Dashboard)

Version 2.0 September 2016

Revision History

Date	Page	Description of Change	Author
09/15/2016	All	Updated manual for 2012.	TE

Table of Contents

Revision History	i
Table of Contents	ii
List of Figures	iv
Introduction	1
Overview of Software	1
Minimum Hardware/Software Requirements	2
Minimum Hardware Requirements	2
<i>Server (Application)</i>	2
<i>Client/Training Room Hardware (Desktop PC)</i>	2
<i>Network Connection</i>	2
Minimum Software Requirements	3
<i>Server</i>	3
<i>Client/Training Room (Desktop PC)</i>	3
Required KIDS File	4
VistA Menu Option Requirements	5
Triggers for Dashboard	6
Directory Information	7
Directory Structure	7
Sharing & Security Permissions	8
<i>Sharing</i>	8
<i>Security</i>	11
MTEExchangeTemporary Encryption	14
Folder/File Mapping	15
X:\MATERNITY TRACKER	15
VistA Configuration	16
TIU Document Titles	16
Reminder Dialogs	16
DSIO KIDS Install	17
Verification that the TIU Document Titles Were Extracted	18
Assign Secondary Menu Option	19
Schedule the Task to PUSH Discreet Data	19
Set Trigger Parameters	21
Configure Triggering	21
Configure Consults	22
Configure Labs	22
Configure Problems	23
MCC Dashboard – System Setup and Configuration	25
Verify the IIS Role	25
Install the Web Platform Installer	30
Install msdeploy.exe (Web Deploy X.X) Using Web Platform Installer	30
Copy Installation Files to Any Local Folder on the Server	30
Install the Dashboard Application by Running the Following Command from an Administrative Command Prompt	31
Install and Bind an SSL Certificate to the Web Application Using IIS Manager	35
Web.config Configuration	41
<i>Server Manager Configuration</i>	41

<i>Manual Configuration</i>	43
Rollback Instructions	45
User's Access to Maternity Tracker	45
Scheduled Task	45
Triggering of Consults, Labs & Problems	45
Dashboard's access to VistA	46

List of Figures

Figure 1: VMS Directory Format	1
Figure 2: Maternity Tracker Properties	8
Figure 3: Advanced Sharing	9
Figure 4: Permissions for Maternity Tracker	10
Figure 5: Maternity Tracker Properties - Security	11
Figure 6: Permissions for MTExchangeTemporary	12
Figure 7: Select Users or Groups	12
Figure 8: Select Users or Groups - Check Names (IIS_IUSERS)	13
Figure 9: Permissions for IIS_USRS - Full Control	13
Figure 10: Problem List to Search	23
Figure 11: Dashboard	25
Figure 12: Before You Begin	25
Figure 13: Installation Type	26
Figure 14: Server Selection	26
Figure 15: Add Roles and Features Wizard	27
Figure 16: Features	27
Figure 17: Web Server Role (IIS)	28
Figure 18: Web Server Configuration	28
Figure 19: Management Tools	29
Figure 20: Installation Progress	29
Figure 21: Web Deploy 3.6	30
Figure 22: Run as Administrator	31
Figure 23: Command Prompt	31
Figure 24: Artemis Deploy	32
Figure 25: CDA Properties	33
Figure 26: cda Properties - Security	33
Figure 27: Permissions for cda	34
Figure 28: Server Manager	35
Figure 29: Server Certificates	36
Figure 30: Site Bindings	36
Figure 31: Add Site Binding	37
Figure 32: Site Bindings	37
Figure 33: MCCDashboard Web Site	38
Figure 34: Browse *.443 (https)	38
Figure 35: Certificate Error	39
Figure 36: Security Alert	39
Figure 37: Maternity Tracker Web Page	40
Figure 38: Server Manager Configuration	41
Figure 39: Server Manager	42
Figure 40: Internet Information Services (IIS) Manager	42
Figure 41: Collection Editor - appSettings/	43
Figure 42: Web.config	43

Introduction

Overview of Software

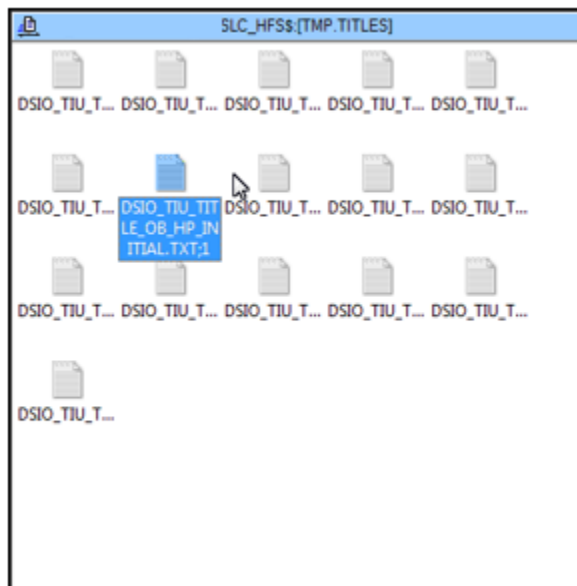
The Maternity Tracker is a set of applications and enhancements which facilitate tracking of maternal care in the perinatal period. The purpose of the system is to provide the Maternity Care Coordinator (MCC) and other key providers with the tools necessary to ensure that the veteran receives optimal care during pregnancy. The system also collects relevant data that is necessary for program tracking and analysis. The system consists of several components including a web-based dashboard application, and a patient portal prototype.

Note: In general, the installation should be followed in the order in which it is structured in this manual. However, the MCC Dashboard can be installed once a server and directory structure have been configured.

****Note:** The areas including **MTEExchangeTemporary Encryption** and **MCC Dashboard – System Setup and Configuration** are not complete with respect to a site's Security Policy. For this reason, **IT IS THE RESPONSIBILITY OF THE SITE** to configure these in compliance with their Security Policy.**

*** In addition, this manual utilizes a windows structure for the directory format, however this will depend on the underlying platform. For example, below is an illustration of VistA being hosted on a VMS machine

Figure 1: VMS Directory Format



Minimum Hardware/Software Requirements

Minimum Hardware Requirements

Server (Application)

- 2.3 GHz Processor Speed or faster, 64-bit (Recommended – 4 Core +).
- 8.0 GB of Memory (RAM) or higher.
- 100.0 GB C:\ Partition for the Operating System, Patches, Service Packs, Installation Files, etc.
- 60.0 GB of storage available to install applications (Recommended – Non C:\ Partition).
- 100 Mbps Network Interface Card (Recommended – 1.0 Gbps / Full Duplex).
- CD/DVD input device, Keyboard, Monitor, Mouse.
- Ports 80/443 should be available and open.

Client/Training Room Hardware (Desktop PC)

- 3.0 GHz Processor Speed (or multi core equivalent).
- 4.0 GB of Memory (RAM).
- 20.0 GB of storage available to install applications.
- 100 Mbps Network interface card.
- CD/DVD input device, Keyboard, Monitor, Mouse.
- USB 2.0 Connection.

Network Connection

Minimum network connection to the backbone is 100Mbps. Minimum connection between the Client/ Training room PC and the VISTA share is 100 Mbps (This is only a LAN requirement and does not specify the minimum for a WAN connection).

MCC Dashboard Application **MUST** have access to SLC VA Cache/VistA database by Server Name and Port

Minimum Software Requirements

Note: The Dashboard will by default install to the c:\ drive, and is not recommended to be changed.

Server

- Microsoft Windows Server (2008 or 2012) R2, 64-bit.
- Latest service pack, critical updates, and all security patches.
- Adobe Acrobat Reader (Current VA released version, Optional).
- Microsoft Internet Explorer (v9.0 and above).
- SSL Certificate **MUST** be installed and available to be bound to the web application.

Client/Training Room (Desktop PC)

- Microsoft Windows 7, 64-bit.
- Latest service pack, critical updates, and all security patches applied.
- Adobe Acrobat Reader (Current VA released version, Optional).
- RPC Broker 1.1 or higher.
- Microsoft Internet Explorer (v9.0 and above).

Required KIDS File

DSIO_X_X.KID

VistA Menu Option Requirements

Users authorized to use the MCC Dashboard require the following secondary menu option:

DSIO GUI CONTEXT

Triggers for Dashboard

1. Consults - What are the exact names of any consults or consult services pertaining to a new pregnancy?
2. Lab tests - What are the names of labs done for pregnancy (beta HCG, Pregnancy Test, etc.)? These are the test names as they are set up in the Laboratory Test file (60).
3. Problem List - What problems would be entered on the CPRS Problems tab that indicate a new pregnancy? What are the problem descriptions and SNOMED codes?

Directory Information

Directory Structure

The following are **Recommended Guidelines** to be performed on the Maternity Tracker Web Server, for the folders and related security to be created prior to the install. A facility may have their own policy for folder shares and their respective permissions.

The **X** in the table is meant to represent the drive chosen to store the Maternity Tracker folder structure. This is **HIGHLY RECOMMENDED** to be a **NON-SYSTEM** folder, off the root of the server.

Note: The base of the Maternity Tracker folder structure is specified in this scenario as - “**Maternity Tracker**”, but in actuality it could be any comparable folder.

Root Folder	Sub-Folder	Description
X:\Maternity Tracker		The Base of the Maternity Tracker folder structure.
	\Dashboard	Sub-Folder to contain dashboard related files.
	\Documentation	Sub-Folder to contain product documentation files.
	\Updates	Sub-Folder to contain updates.
X:\MTExchangeTemporary		Encrypted folder.

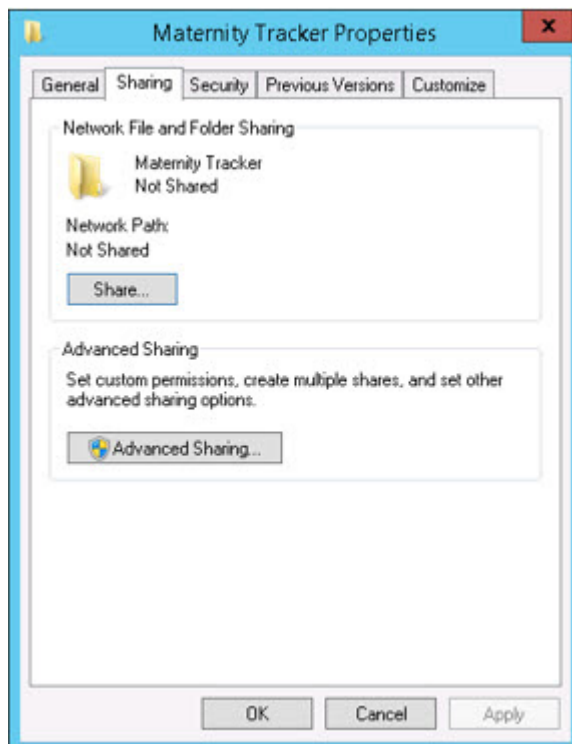
Sharing & Security Permissions

For the **NON-SYSTEM** Folder (X:\), off the root of the server (\\SERVERNAME), the Sharing & Security Permissions are set as follows:

Sharing

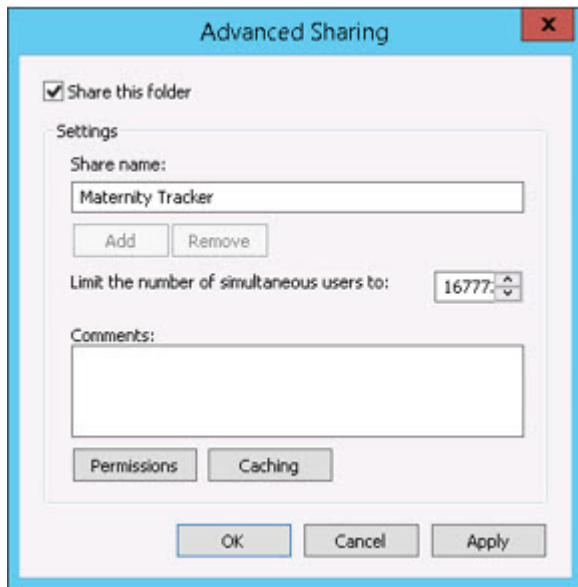
1. Right-click the **Maternity Tracker** folder, then click the **Properties** option.
2. The **Properties** dialog box appears. Click the **Sharing** tab, and then click the **Advanced Sharing** button.

Figure 2: Maternity Tracker Properties



3. The Advanced Sharing screen displays. At this point, check the **Share this folder** checkbox, and click the **Permissions** button.

Figure 3: Advanced Sharing



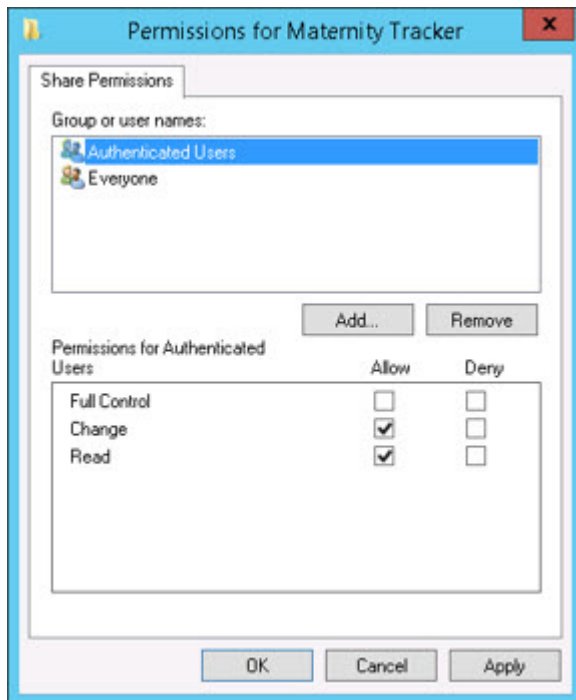
4. The Permissions screen displays. Verify if Authenticated Users is listed in the Group or user names list box.

Note: The User/Group added will depend on the Site's Security Policy. It is recommended that the **Authenticated Users** group be utilized.

5. If Authenticated Users is not listed, then click the **Add** button to add the Authenticated Users Group.

- Click/select **Authenticated Users** in the Group or user names list box, and in the Permissions for Authenticated Users list box, click the **Allow** check boxes for **Change** and **Read**.

Figure 4: Permissions for Maternity Tracker



- Click the **Apply** button, then the **OK** button, and then the **OK** button again, to return to the Properties screen.

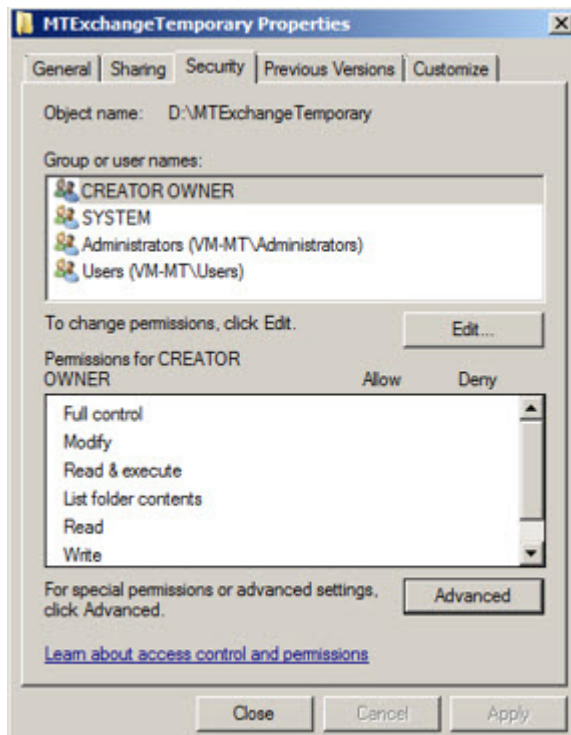
Note: Per site security, you may want to remove the **Everyone** group.

Security

MTEExchangeTemporary

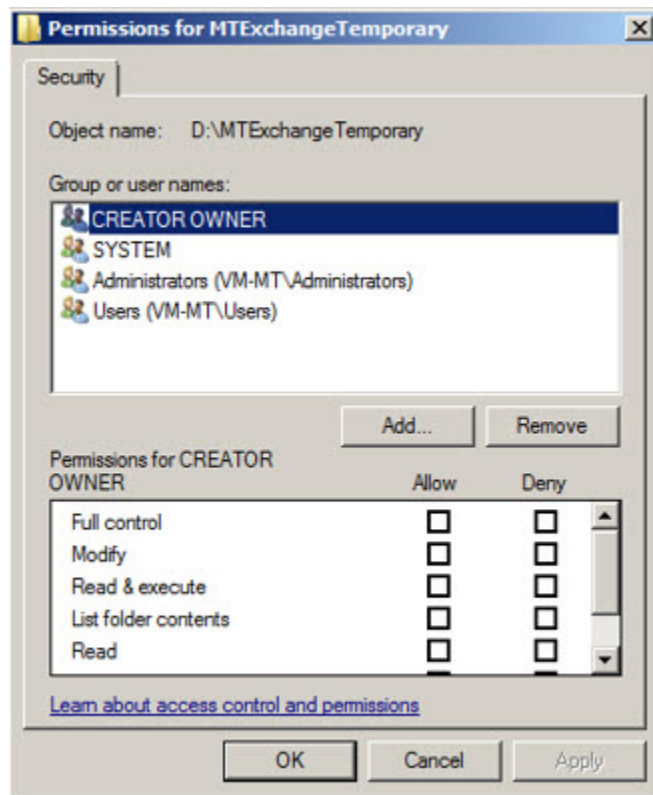
1. Right click the MTEExchangeTemporary folder, and click **Properties**.
2. From the Properties screen, click the **Security** tab.
3. Verify that the Appropriate Group(s) are listed in the Group or user names list box, and that they have the Appropriate Permissions.
4. Click **Edit** to change permissions.

Figure 5: Maternity Tracker Properties - Security



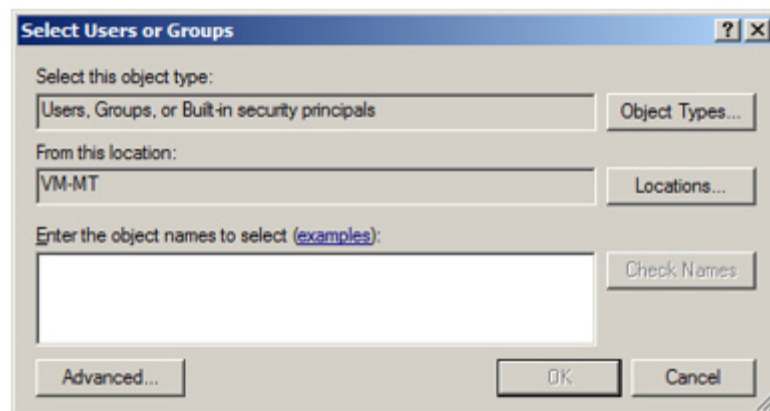
5. Verify the **Group or user names** list box for the **IIS_IUSRS** group.

Figure 6: Permissions for MTEExchangeTemporary



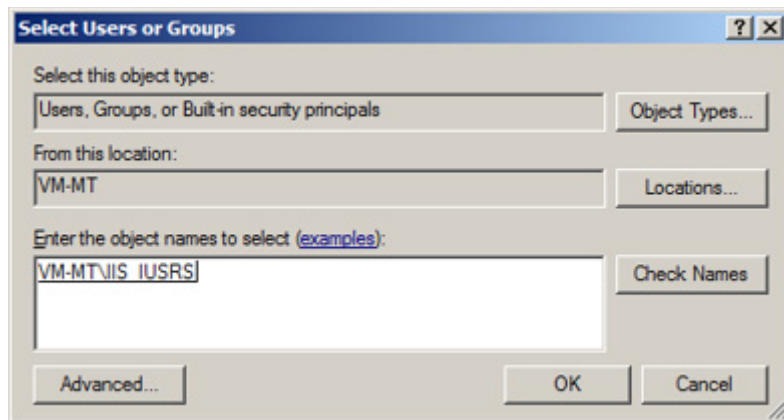
6. If **IIS_IUSERS** is not included in the list, click the **Add** button, so the **Select Users or Groups** window displays.

Figure 7: Select Users or Groups



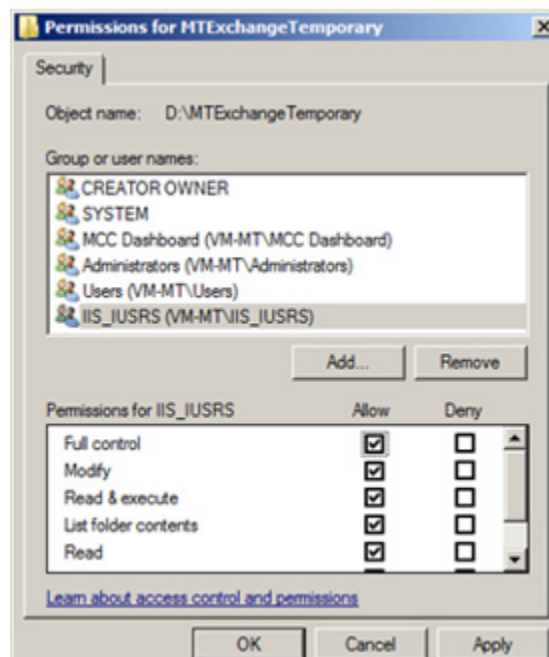
- Click the **Advanced** and **Find Now** buttons to select **IIS_IUSERS**, and click **OK** to close the window.

Figure 8: Select Users or Groups - Check Names (IIS_IUSERS)



- For the **IIS_IUSRS** group, click the **Full control** check box (for Allow). Then click **Apply** and **OK**.

Figure 9: Permissions for IIS_USRS - Full Control



MTEExchangeTemporary Encryption

Encryption should be enabled for the X:\MTEExchangeTemporary folder.

This folder is a temporary storage location for patient IHE documents.

The full development of the subject is beyond the scope of this document. The actual implementation of the Encryption **MUST** be in compliance with the site's security policies, and **IS THE RESPONSIBILITY OF THE SITE** to implement and maintain the encryption.

Folder/File Mapping

The placement of the associated Maternity Tracker files is only a recommendation, in order to group the files in a central location.

X:\MATERNITY TRACKER

X:\MATERNITY TRACKER\DASHBOARD
InstallExisting.bat
InstallExistingTest.bat
Install.bat
InstallTest.bat
va.gov.artemis.ui.deploy.cmd
va.gov.artemis.ui.deploy-readme.txt
va.gov.artemis.ui.SetParameters.xml
va.gov.artemis.ui.SourceManifest.xml
va.gov.artemis.ui.zip
X:\MATERNITY TRACKER\DOCUMENTATION
Maternity Tracker Installation Manual vX.XX.pdf
Maternity Tracker Configuration Guide vX.XX.pdf
Maternity Tracker User Manual vX.XXpdf
X:\MATERNITY TRACKER\UPDATES
DSIO_XXX.KID
DSIO_TITLES.zip
MD_PP_FU_vX.XX.PRD
X:\PORTAL
mt-portal.deploy.cmd
mt-portal.deploy-readme.txt
mt-portal.SetParameters.xml
mt-portal.SourceManifest.xml
mt-portal.zip

VistA Configuration

The following items of configuration are involved with Maternity Tracker:

- TIU Document Titles
- Reminder Dialogs
- DSIO KIDS INSTALL
- Verification that the TIU Document Titles were extracted
- Assign Secondary Menu Option
- Schedule the Task to PUSH Discreet Data
- Set Trigger Parameters
- Configure Triggering
 - Configure Consults
 - Configure Labs
 - Configure Problems

TIU Document Titles

Prior to the install of DSIO, the TIU Document Titles zip file (TITLES.zip) **MUST** be extracted and placed in the Default directory of the VistA server being utilized.

If the Default directory is not known, the following command can be executed from a terminal window:

```
VAH>W $$DEFDIR^%ZISH  
C:\HFS\
```

Note: This example is the Default directory for the machine the demonstration is being performed on. The actual machine may or may not have the same Default Directory. Should the value need to be changed, there are commands available for this purpose.

Copy the DSIO TIU Document Titles zip file into the default directory. Once the TIU Document Titles have been copied, select the file, right click and select **EXTRACT HERE**. Verify that a folder called **TITLES** exists within the default directory, and that TIU Document Titles exist within the TITLES folder. The extraction of the TIU Document Titles **MUST** be performed before the builds are installed, as the DSIO build will look for these TIU Document Titles inside the default directory's Titles folder during installation and bring them into CPRS. *(Once installation of the builds has been finalized, the builds and titles can be erased from the default directory. If a build needs to be re-installed it should be copied into the default directory of the server).*

Reminder Dialogs

The file **MD_PP_FU_vX.XX.PRD** (from X:\MATERNITY TRACKER\UPDATES) **MUST** also be placed in the Default directory of the VistA server being utilized.

DSIO KIDS Install

Perform a normal KIDS install through Kernel Installation & Distribution System.

Note: To complete the installation, you will be asked to complete the PATH to the TIU TITLE import files. This Path **MUST** be the full Path.

Set the path where the TIU TITLE import files are located.

Enter directory name or path: C:\HFS\ <Enter full path>

For example, if the full Path includes the **TITLES** folder, then it **MUST** be included: C:\HFS\TITLES.

Enter directory name or path: C:\HFS\ C:\HFS\TITLES

Note: The Hospital Location **MUST** be specified. A search for existing locations has been provided, and will only be required if it has not already been specified.

This is required for configuring the dashboard to use maternity related TIU notes, **if not completed the dashboard will be unable to save a note** and will have to be configured manually. Otherwise, the location can be changed after installation. In either case, the edits can be accomplished through FileMan via the DSIO TITLE CONFIGURATION file. To run post installation again you can “D ^DSIO99” at programmer prompt (without quotes).

Choose your Maternity Tracker hospital location. All TIU notes created via the dashboard will use this hospital location.

Select HOSPITAL LOCATION: <Select the dashboard hospital location>

For example, if GENERAL MEDICINE was desired, the following sequence would select **GENERAL MEDICINE**.

Select HOSPITAL LOCATION: GENERAL <RETURN>

1 **GENERAL MEDICINE**

2 GENERAL MEDICINE 1

3 GENERAL MEDICINE 10

4 GENERAL MEDICINE 2

5 GENERAL MEDICINE 3

Press <RETURN> to see more, '^' to exit this list, OR

CHOOSE 1-5: 1 <RETURN>

Verification that the TIU Document Titles Were Extracted

VAH>D ^XUP

Select OPTION NAME: **TIU IRM**

- 1 TIU IRM MAINTENANCE MENU TIU Maintenance Menu
- 2 TIU IRM TEMPLATE MGMT TIU Template Mgmt Functions

CHOOSE 1-2: **1 TIU IRM MAINTENANCE MENU** TIU Maintenance Menu

- 1 TIU Parameters Menu ...
- 2 Document Definitions (Manager) ...
- 3 User Class Management ...
- 4 TIU Template Mgmt Functions ...

You have PENDING ALERTS

Enter "VA to jump to VIEW ALERTS option

Select TIU Maintenance Menu Option: **2 Document Definitions (Manager)**

--- Manager Document Definition Menu ---

- 1 Edit Document Definitions
- 2 Sort Document Definitions
- 3 Create Document Definitions

You have PENDING ALERTS

Enter "VA to jump to VIEW ALERTS option

Select Document Definitions (Manager) Option: **1 Edit Document Definitions.....**

Edit Document Definitions Jan 15, 2015@12:02:58 Page: 1 of 1

BASICS

	<u>Name</u>	<u>Type</u>
1	CLINICAL DOCUMENTS	CL
2	+PROGRESS NOTES	CL
3	+ADDENDUM	DC
4	+DISCHARGE SUMMARY	CL
5	+SURGICAL REPORTS	CL
6	+LR LABORATORY REPORTS	CL
7	+CLINICAL PROCEDURES	CL

?Help >ScrollRight PS/PL PrintScrn/List +/- >>>

Jump to Document Def	Status...	Delete
Boilerplate Text	Name/Owner/PrintName...	Copy/Move

Select Action: Quit// **EX Expand/Collapse**

Select Entry: (1-7): **2**

Edit Document Definitions Jan 15, 2015@12:03:21 Page: 4 of 4

BASICS

+	<u>NameType</u>
...	
44	+C&P EXAMINATION REPORTSDC
45	+SCI OUTCOMESDC
46	+MEDICINEDC
47	+CARE COORDINATION HOME TELEHEALTH NOTESDC
48	+FORM LETTERSDC
49	+SECURE MESSAGING DOCUMENTSDC
50	+ MATERNITY TRACKER DC
51	+PROVIDERDC

52 +TBI/POLYTRAUMA DOCUMENTSDC
 53 +ADDENDUMDC
 54 +DISCHARGE SUMMARYCL
 55 +SURGICAL REPORTSCL
 56 +LR LABORATORY REPORTSCL
 57 +CLINICAL PROCEDURESCL

Note: **MATERNITY TRACKER** can be expanded to view the notes.

Assign Secondary Menu Option

VistA Menu Option Requirement — DSIO GUI CONTEXT

Schedule the Task to PUSH Discreet Data

VAH>**D ^XUP**

Press <**Enter**>

Select OPTION NAME: **EVE**

- 1 EVE Systems Manager Menu
- 2 EVENT CAPTURE ECX ECS MAINTENANCE Event Capture

...

CHOOSE 1-5: 1 **EVE** Systems Manager Menu

Core Applications ...

Device Management ...

FM VA FileMan ...

Menu Management ...

Programmer Options ...

Operations Management ...

Spool Management ...

Information Security Officer Menu ...

Taskman Management ...

User Management ...

Application Utilities ...

Capacity Planning ...

HL7 Main Menu ...

Manage Mailman ...

Select Systems Manager Menu Option: **Taskman Management**

Schedule/Unschedule Options

One-time Option Queue

Taskman Management Utilities ...

List Tasks

Dequeue Tasks

Require Tasks

Delete Tasks

Print Options that are Scheduled to run

Cleanup Task List

Print Options Recommended for Queueing
Select Taskman Management Option: **Schedule/Unschedule Options**
Select OPTION to schedule or reschedule: **DSIO DDCCS CHECK STATUS** Act on TIU
note status
Are you adding 'DSIO DDCCS CHECK STATUS' as
a new OPTION SCHEDULING (the 144TH)? No// **YES** (Yes)
Edit Option Schedule
Option Name: DSIO DDCCS CHECK STATUS
Menu Text: Act on TIU note status TASK ID:

Note: Schedule a start date/time.

QUEUED TO RUN AT WHAT TIME: **OCT 22,2015@22:00**
DEVICE FOR QUEUED JOB OUTPUT:
QUEUED TO RUN ON VOLUME SET:

Note: Schedule a duration or frequency.

RESCHEDULING FREQUENCY: **1D**
TASK PARAMETERS:

Note: Schedule the type of queuing.

SPECIAL QUEUEING: **Persistent**

Exit Save Next Page Refresh

Set Trigger Parameters

For each of the follow three items, set the parameter to **YES** to flag patients for tracking:

- DSIO EVAL CONSULTS NOW
- DSIO EVAL LABS NOW
- DSIO EVAL PROBLEMS NOW

An example for **DSIO EVAL CONSULTS NOW** is displayed below.

VAH>**D ^XPAREEDIT**

Press <**Enter**>

--- Edit Parameter Values ---

Select PARAMETER DEFINITION NAME: **DSIO**

- 1 DSIO EVAL CONSULTS NOW Evaluate consults for maternity
- 2 DSIO EVAL LABS NOW Evaluate labs for maternity
- 3 DSIO EVAL PROBLEMS NOW Evaluate problems for maternity.
- 4 DSIO OCNT LOCATION DSIO oCNT Network Address

CHOOSE 1-4: **1 DSIO EVAL CONSULTS NOW** Evaluate consults for maternity

---- Setting DSIO EVAL CONSULTS NOW for System: SMA.FO-TEST.MED.VA.GOV ----
EVALUATE CONSULTS DURING PATIENT SEARCH: **YES**

Configure Triggering

As the names of various Consults, Labs, and Problems may differ from site to site, what is displayed below are examples of how to configure each type.

If not all of the names for each type are known, then this section may need to be revisited to configure them as necessary.

- **Consults** –What are the exact names of any consults or consult services pertaining to a new pregnancy?
- **Lab tests** –What are the names of labs done for pregnancy (beta HCG, Pregnancy Test, etc.) These are the test names as they are set up in the Laboratory Test file (60).
- **Problem List** –What problems would be entered on the CPRS Problems tab that indicate a new pregnancy? What are the problem descriptions and SNOMED codes?

Configure Consults

The procedure below illustrates the steps to enable triggering, for a specific Consult. **For this example**, the Consult is **Initial OB Referral**.

VAH>**D Q^DI**

Select OPTION: **1 ENTER OR EDIT FILE ENTRIES**

INPUT TO WHAT FILE: DSIO TRIGGER CONSULT// **DSIO TRIGGER CONSULTS**

(1 entry)

EDIT WHICH FIELD: ALL//

Select DSIO TRIGGER CONSULT REQUEST SERVICES: **INITIAL OB REFERRAL**

Are you adding 'INITIAL OB REFERRAL' as

a new DSIO TRIGGER CONSULT (the 2ND)? No// **Y** (Yes)

INACTIVE:

STATUS OF: **C**

1 CANCELLED x

2 COMPLETE c

CHOOSE 1-2: 2 **COMPLETE** c

Configure Labs

The procedure below illustrates the steps to enable triggering, for a specific lab test, specimen and associated value. For this example, the associated parameters are: **Pregnancy Test** and **URINE 7X100**.

VAH>**D Q^DI**

Select OPTION: **1 ENTER OR EDIT FILE ENTRIES**

INPUT TO WHAT FILE: **DSIO TRIGGER LABS** (3 entries)

EDIT WHICH FIELD: ALL//

Select DSIO TRIGGER LAB TEST: **Pregnancy Test** PREGNANCY TEST

Are you adding 'PREGNANCY TEST' as

a new DSIO TRIGGER LAB TEST (the 4TH)? No// y (**Yes**)

INACTIVE:

Select SITE/SPECIMEN: Urine

1 URINE 7X100

2 URINE 24 HR URINE URINE

CHOOSE 1-2: 1 **URINE 7X100**

Are you adding 'URINE' as a new SITE/SPECIMEN (the 1ST for this DSIO TRIGGER LAB TEST)?

No// y (**Yes**)

POSITIVE LAB VALUE: **POS**

Select SITE/SPECIMEN:

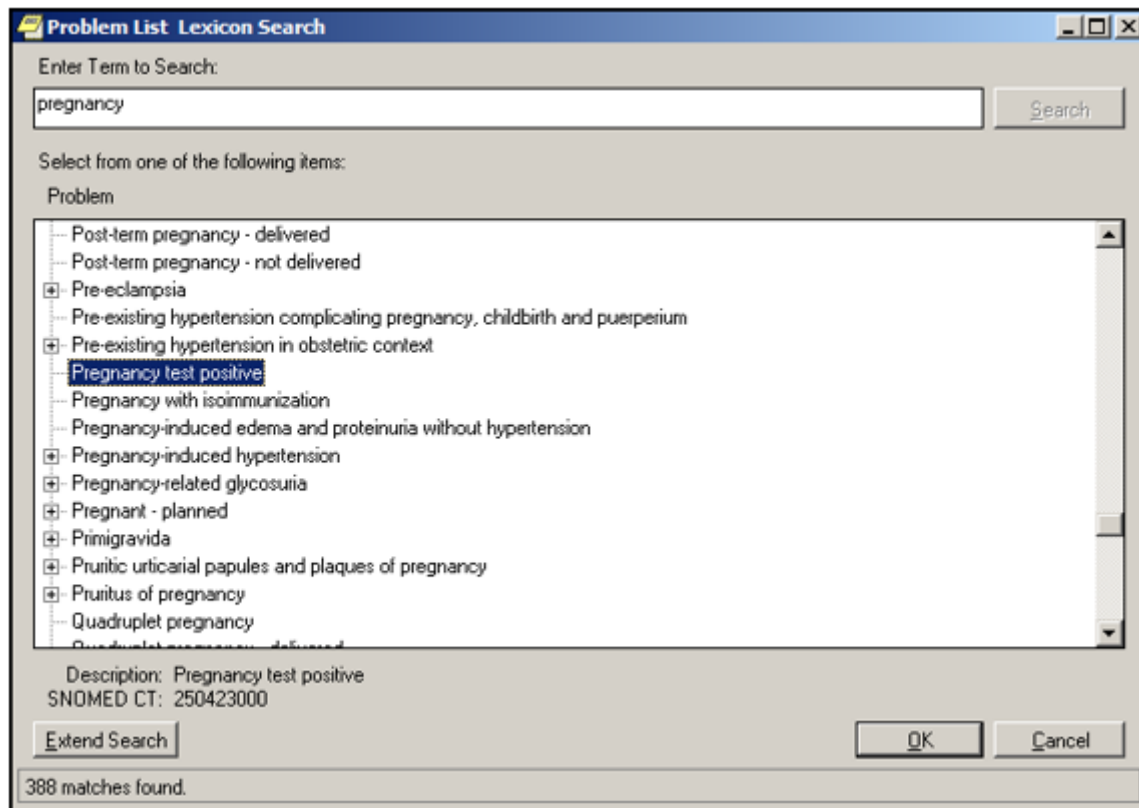
Select PATIENT:

Configure Problems

The procedure below illustrates the steps to enable triggering, for a specific problem. For this example, the problem is: **Pregnancy test positive**.

1. In CPRS, perform a search of the problem that will be used (Pregnancy test positive in this case), and take note of the code (SNOWMED CT) associated with the problem.

Figure 10: Problem List to Search



2. Open a VistA session and complete the following:
VAH>D Q^DI
VA FileMan 22.0
Select OPTION: **ENTER OR EDIT FILE ENTRIES**
INPUT TO WHAT FILE: **DSIO TRIGGER PROBLEMS//**
EDIT WHICH FIELD: ALL//

Note: Enter the SNOWMED code.

Select DSIO TRIGGER PROBLEMS CODE: **250423000**
Searching for a ICD, (pointed-to by CODE)
Searching for a SCT, (pointed-to by CODE)
??
A suitable term could not be found based on user input
Enter Term/Concept:<**ENTER**>
Searching for a ICD
Searching for a SCT
250423000 Pregnancy test positive 250423000 SCT Preferred Active Primary
...OK? Yes// (**Yes**)
Are you adding 'Pregnancy test positive' as
a new DSIO TRIGGER PROBLEMS (the 3RD)? No// y (**Yes**)
INACTIVE:
Select PATIENT:

MCC Dashboard – System Setup and Configuration

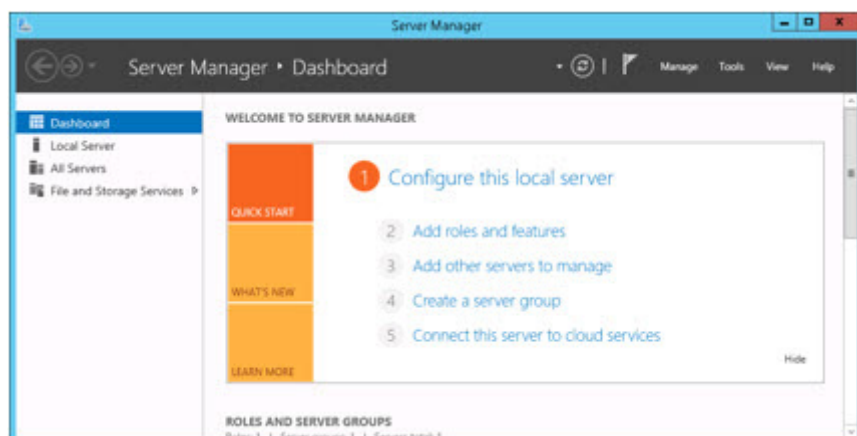
The following steps illustrate the steps involved in setting up a basic Web Server, on a Windows 2012 Server.

IT IS THE RESPONSIBILITY OF THE SITE implementing the Web Server, to verify it is in compliance with their security policy.

Verify the IIS Role

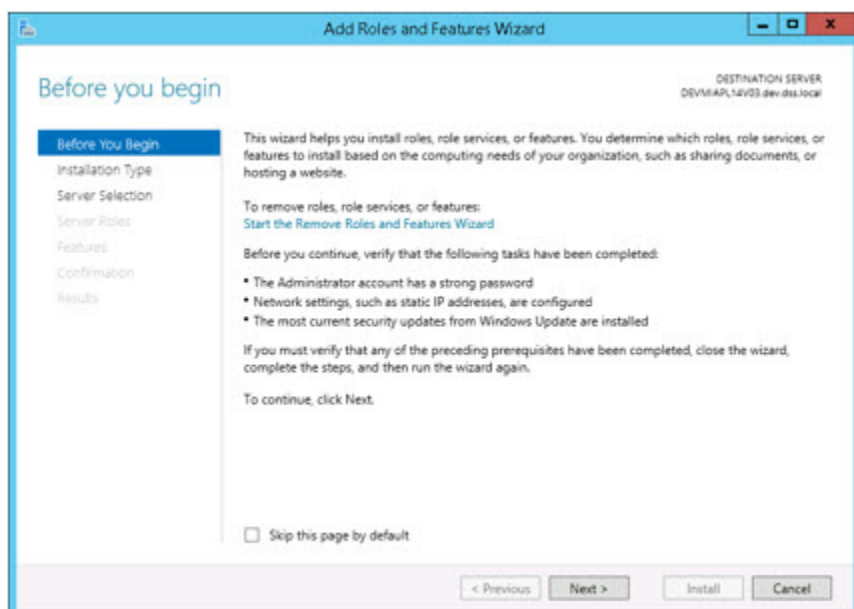
1. Open the **Server Manager**.
2. If IIS has not been installed as a Role, then click the **Add roles and features** option.

Figure 11: Dashboard



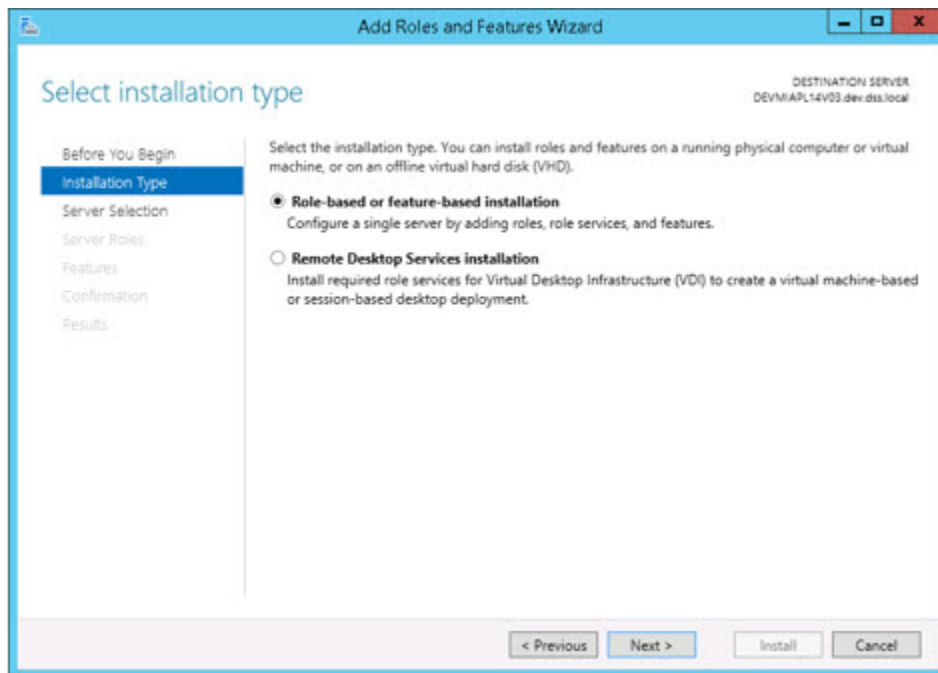
3. Click **Next**.

Figure 12: Before You Begin



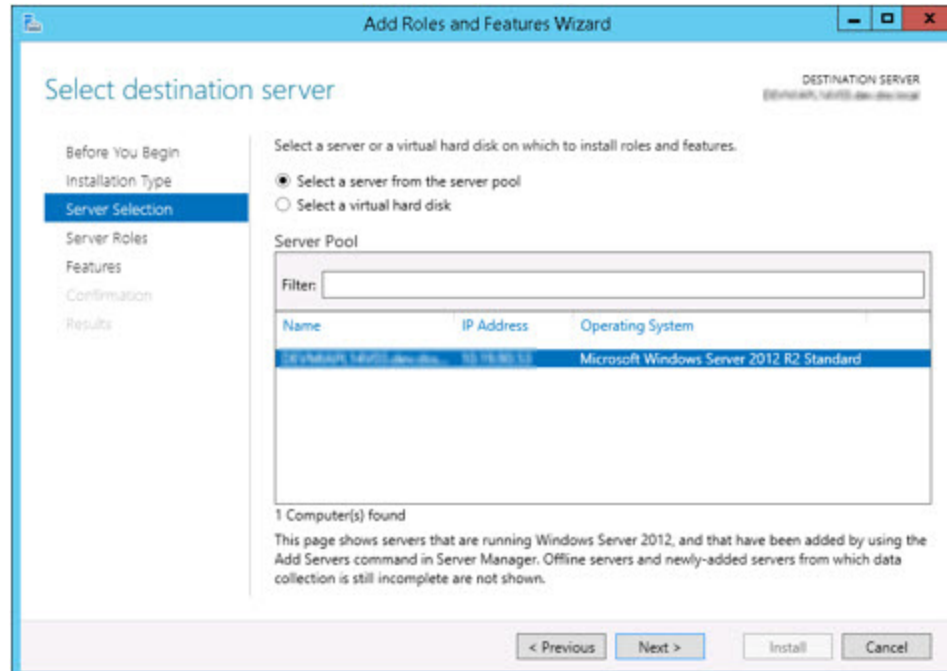
- Click **Next** for the **Role-based or feature-based installation** option.

Figure 13: Installation Type



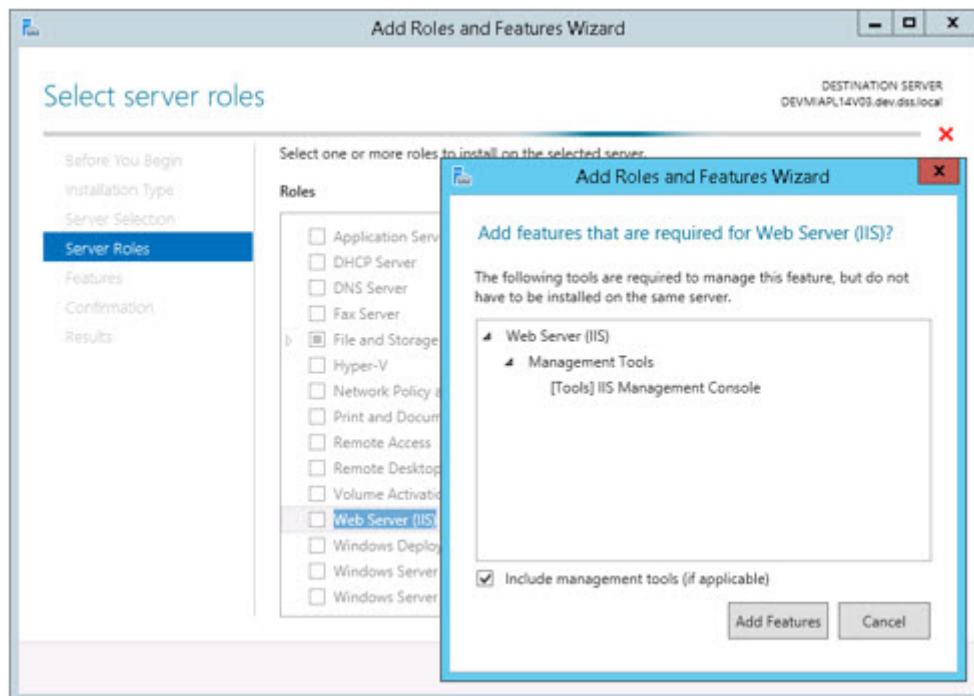
- Click **Next** for the appropriate server.

Figure 14: Server Selection



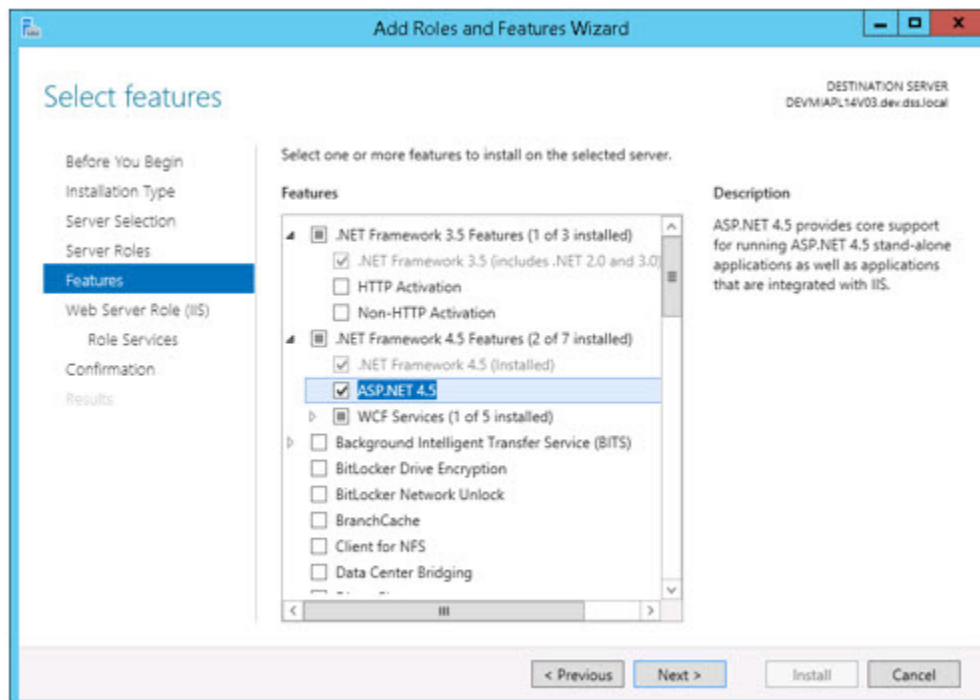
- Click on **Web Server (IIS)**, which will display the Add Roles and Features Wizard. Click the **Include management tools (if applicable)** checkbox, and click **Add Features**. Click **Next**.

Figure 15: Add Roles and Features Wizard



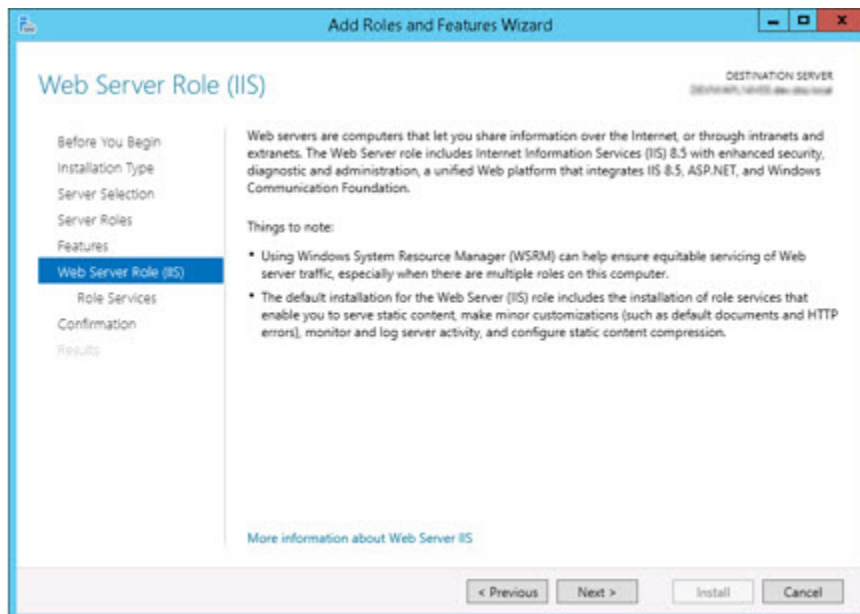
- Verify .NET Framework 3.5 is selected along with .NET Framework 4.5, and ASP.NET 4.5. Click **Next**.

Figure 16: Features



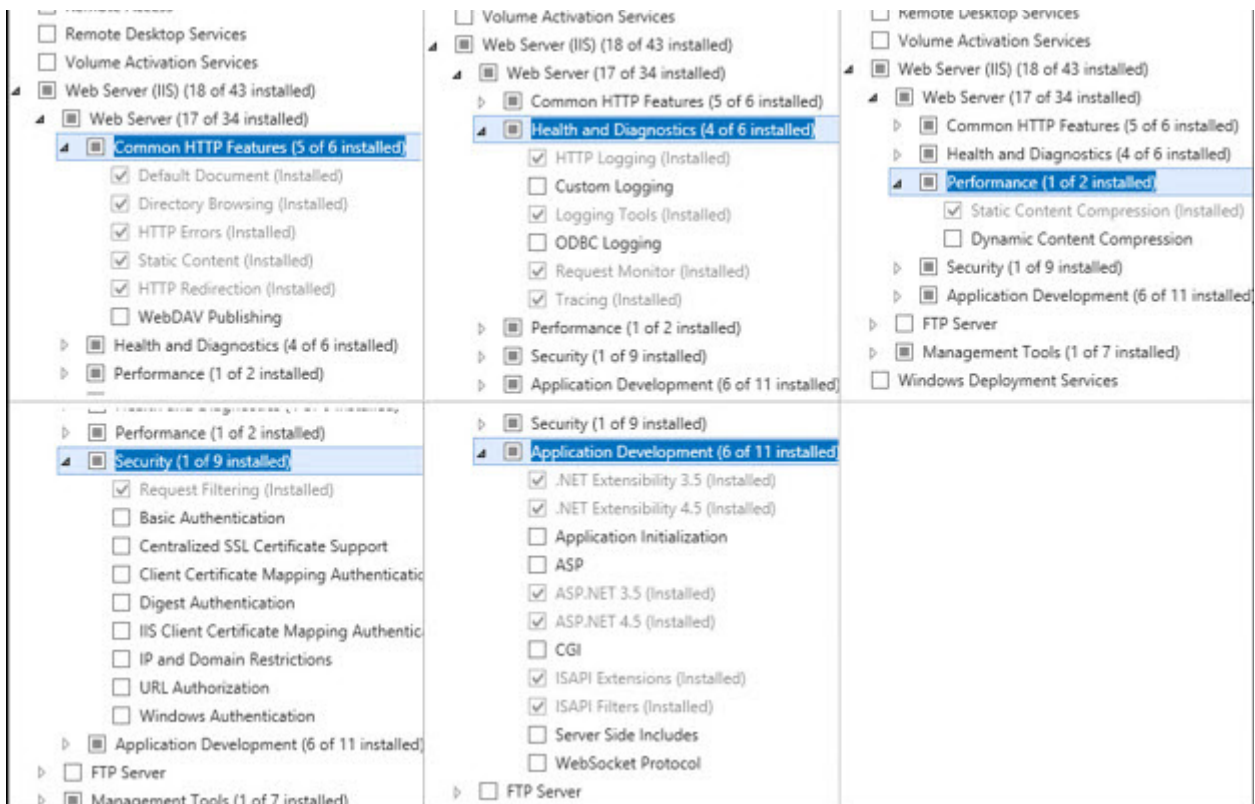
8. Click **Next**.

Figure 17: Web Server Role (IIS)



9. Whether selecting the roles initially, or during an update, the following roles need to be verified for **Web Server**:

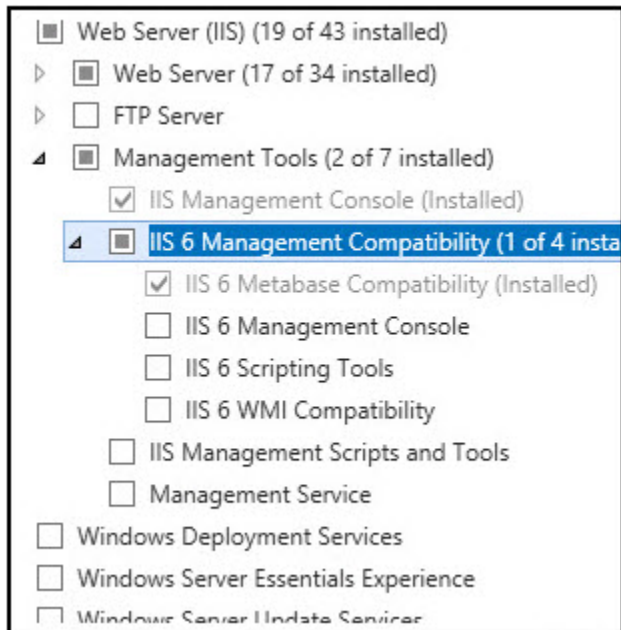
Figure 18: Web Server Configuration



Note: Clicking on **ASP.NET 3.5** will result in an **Add Roles and Features Wizard**. Accept the defaults and click **Add Features**.

10. The following roles need to be verified for **Management Tools**:

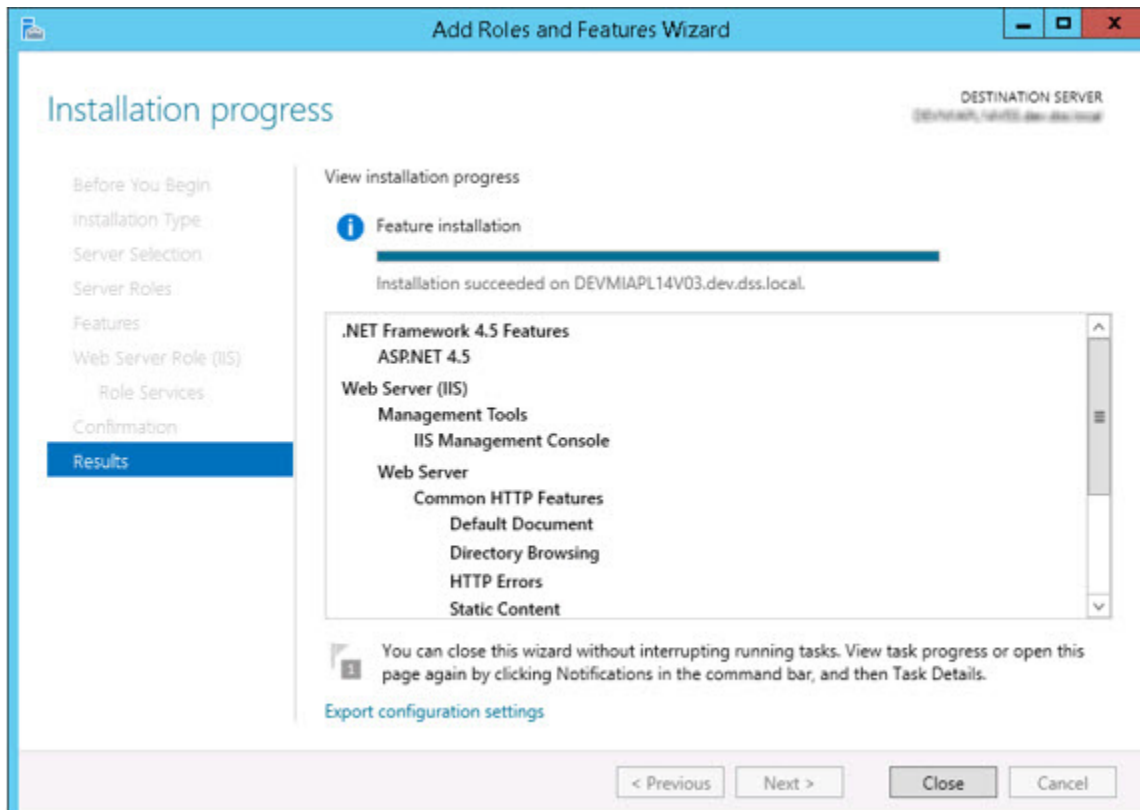
Figure 19: Management Tools



11. Click **Next**. On the **Confirmation/Confirm installation selections** page, check the checkbox for **Restart the destination server automatically if required**, if desired.

12. Click **Install** and finally the **Close** button.

Figure 20: Installation Progress



Install the Web Platform Installer

Navigate to the Internet, download and install the latest **Web Platform Installer**. Leave this open for use in the following steps to install Web Deploy.

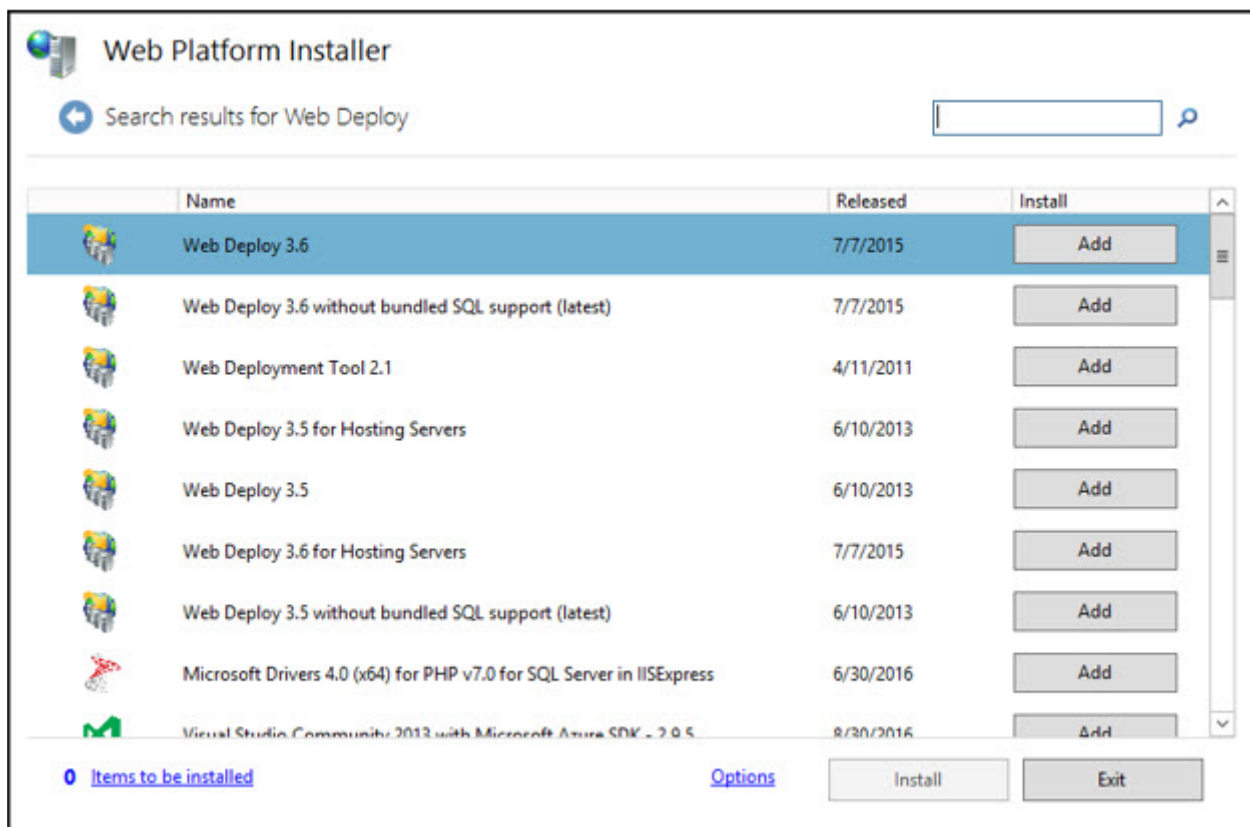
Note: Alternatively, you may download and install Web Deploy 3.6 directly without using the Web Platform Installer. The following link (as of Sept. 2016) contains the download page for it:

<https://www.microsoft.com/en-us/download/details.aspx?id=43717>

Install msdeploy.exe (Web Deploy X.X) Using Web Platform Installer

From the Web Platform Installer, locate the latest **Web Deploy**, and click the **Add** button. This is performed by entering Web Deploy into the search box and pressing <Enter>. Click the **Install** button, followed by the **I Accept**, and **Finish** buttons.

Figure 21: Web Deploy 3.6



Copy Installation Files to Any Local Folder on the Server

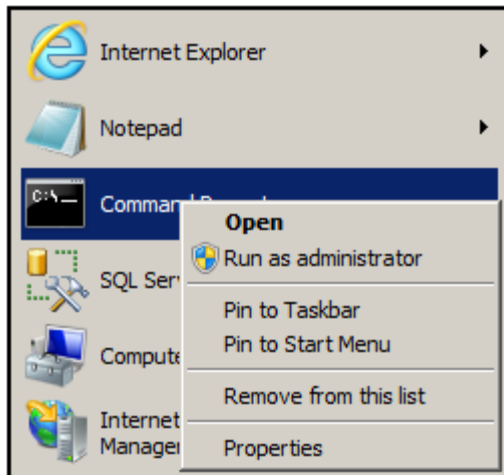
The files required for the installation of the Dashboard can be placed anywhere on the server where the Dashboard is to be installed, however it is recommended that they be placed in the following folder:

\\SERVERNAME\MATERNITY TRACKER\DASHBOARD

Install the Dashboard Application by Running the Following Command from an Administrative Command Prompt

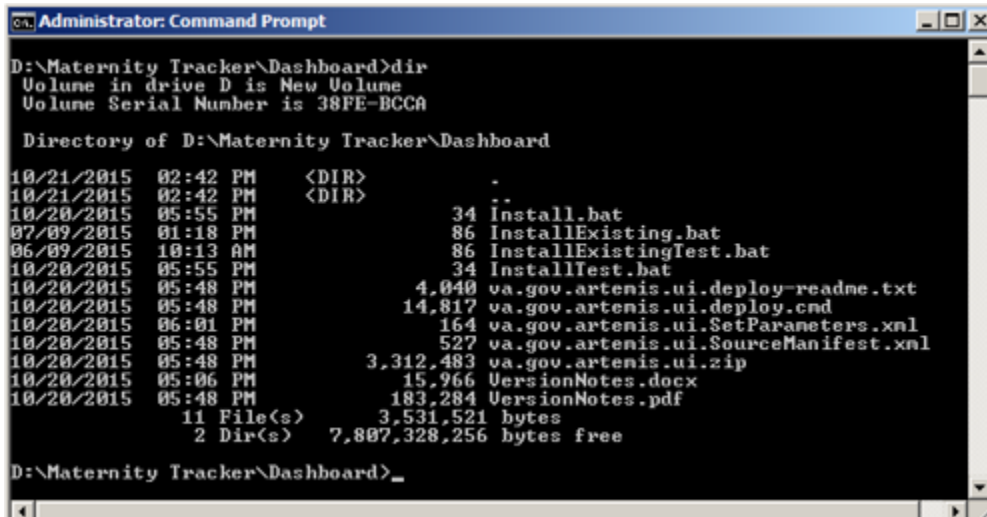
1. From a **Command Prompt** start option, right click **Command Prompt**, and click **Run as administrator**, from the newly displayed menu options.

Figure 22: Run as Administrator



2. CD to the location of the installation files.

Figure 23: Command Prompt



3. In file **va.gov.artemis.ui.SetParameters.xml**, verify that the correct Web Site is being installed.

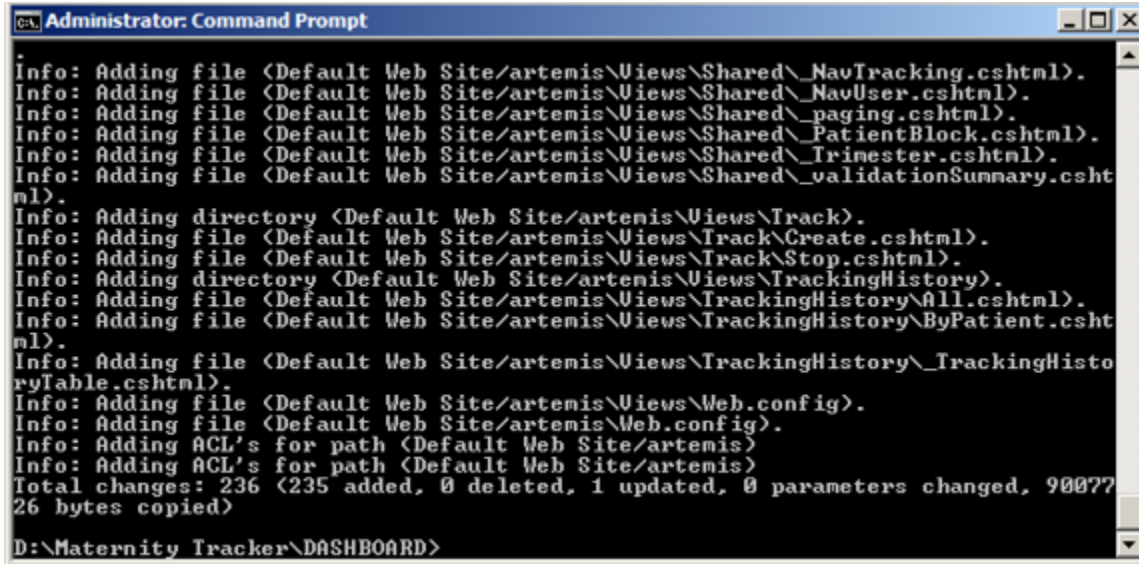
```
<?xml version="1.0" encoding="utf-8"?>  
<parameters>  
<setParameter name="IIS Web Application Name" value="Default Web Site/MCCDashboard" />  
</parameters>
```

For instance - **MCCDashboard** - will be the name of the Default Web Site.

4. To test the installation, execute the following, verifying no errors occur:
InstallTest.bat
5. To run the actual installation, execute the following, again verifying no errors occur:
Install.bat

Note: For **updating** the Dashboard, **InstallExistingTest.bat**, followed by **InstallExisting.bat**.

Figure 24: Artemis Deploy

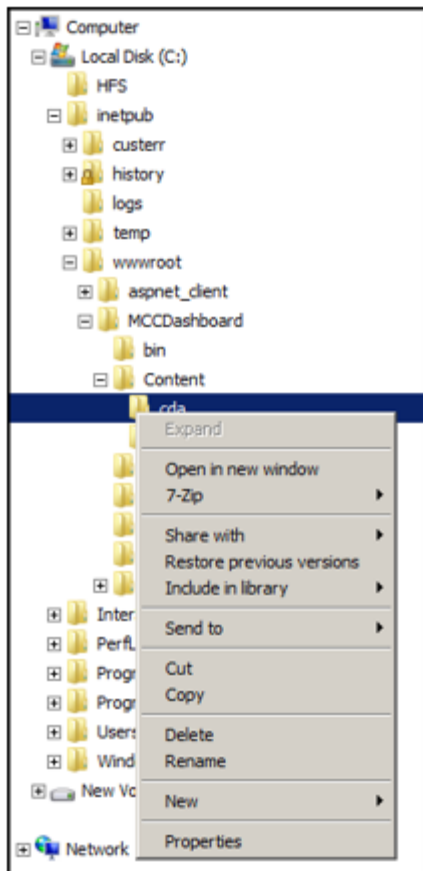


```
Administrator: Command Prompt
-
Info: Adding file <Default Web Site/artemis\Views\Shared\_NavTracking.cshtml>.
Info: Adding file <Default Web Site/artemis\Views\Shared\_NavUser.cshtml>.
Info: Adding file <Default Web Site/artemis\Views\Shared\_paging.cshtml>.
Info: Adding file <Default Web Site/artemis\Views\Shared\_PatientBlock.cshtml>.
Info: Adding file <Default Web Site/artemis\Views\Shared\_Trimester.cshtml>.
Info: Adding file <Default Web Site/artemis\Views\Shared\_validationSummary.cshtml>.
Info: Adding directory <Default Web Site/artemis\Views\Track>.
Info: Adding file <Default Web Site/artemis\Views\Track\Create.cshtml>.
Info: Adding file <Default Web Site/artemis\Views\Track\Stop.cshtml>.
Info: Adding directory <Default Web Site/artemis\Views\TrackingHistory>.
Info: Adding file <Default Web Site/artemis\Views\TrackingHistory\All.cshtml>.
Info: Adding file <Default Web Site/artemis\Views\TrackingHistory\ByPatient.cshtml>.
Info: Adding file <Default Web Site/artemis\Views\TrackingHistory\_TrackingHistoryTable.cshtml>.
Info: Adding file <Default Web Site/artemis\Views\Web.config>.
Info: Adding file <Default Web Site/artemis\Web.config>.
Info: Adding ACL's for path <Default Web Site/artemis>
Info: Adding ACL's for path <Default Web Site/artemis>
Total changes: 236 <235 added, 0 deleted, 1 updated, 0 parameters changed, 9007726 bytes copied>
D:\Maternity Tracker\DASHBOARD>
```

6. Verify that the following folder exists: c:\inetpub\wwwroot\MCCDashboard\content\cda.

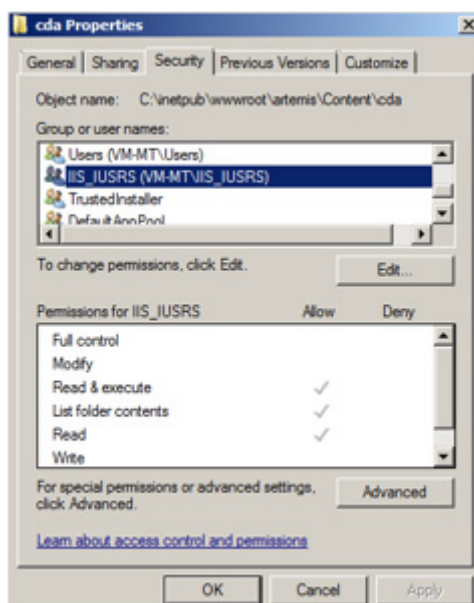
7. Verify **Full control** permissions exist for this folder, for the IIS_IUSRS group
 - a. Navigate to the \Content\CDA folder, right-click the **CDA** folder, and click **Properties**.

Figure 25: CDA Properties



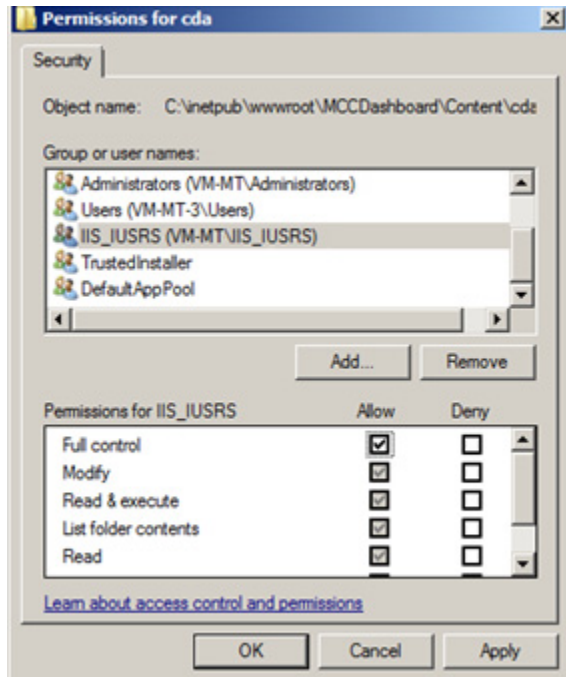
- b. Click the **Security** tab, and locate the **IIS_IUSRS** group.

Figure 26: cda Properties - Security



- c. Click the **Edit** button, and again locate the IIS_IUSRS group. Verify the **Full control** permissions have been selected, and click **Apply**, **OK**, and close the Permissions for cda dialog box.

Figure 27: Permissions for cda



8. Verify that the following folder exists - c:\inetpub\wwwroot\MCCDashboard\content\logs.

If necessary create the **logs** folder:

c:\inetpub\wwwroot\MCCDashboard\content\logs

9. As with the cda folder - verify **Full control** permissions exist for the **logs** folder, for the IIS_IUSRS group.

Install and Bind an SSL Certificate to the Web Application Using IIS Manager

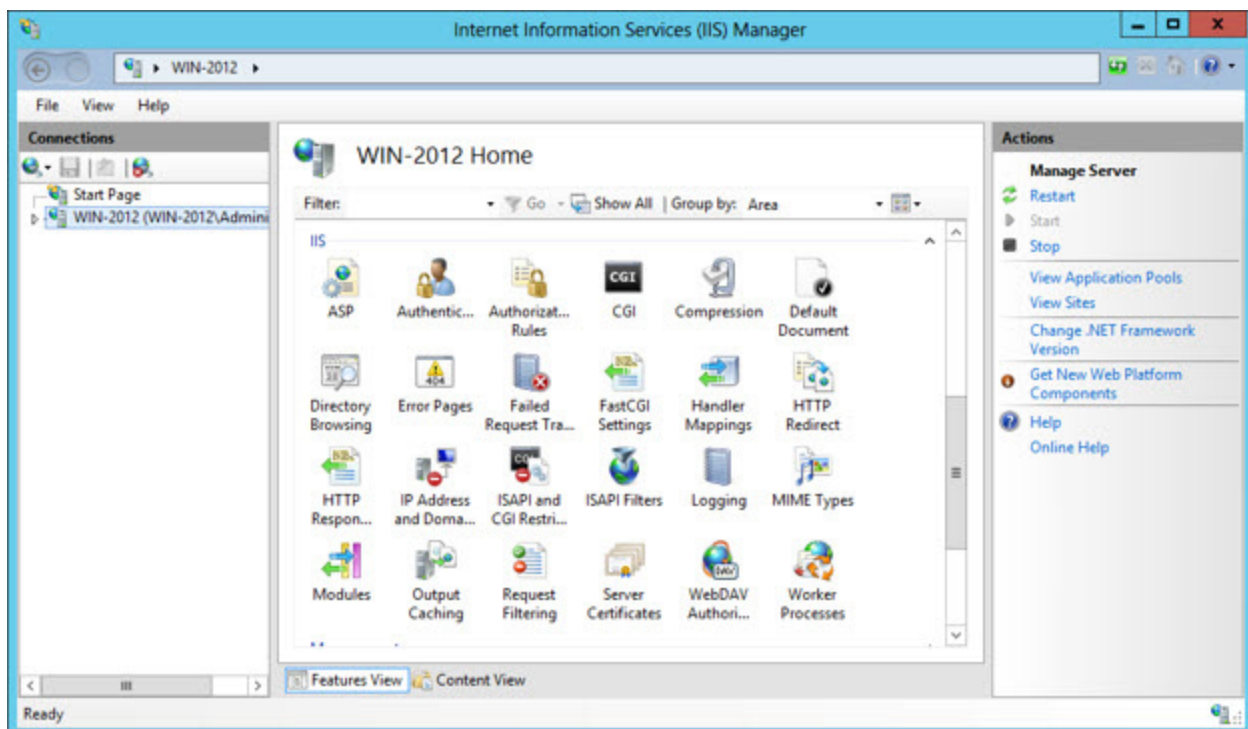
Note: The following represents a simple example for creating/configuring a certificate. The full development of the subject is beyond the scope of this document. The actual implementation of creating/configuring the certificate **MUST** be in compliance with the site's security policies, and **IS THE RESPONSIBILITY OF THE SITE** to implement and maintain the SSL certificate. For instance, the certificate **MUST** be renewed periodically, prior to its expiration.

For information on Binding, SSL certificates and Web Applications, please consult the following web site:

<http://www.iis.net/learn/manage/configuring-security/how-to-set-up-ssl-on-iis>

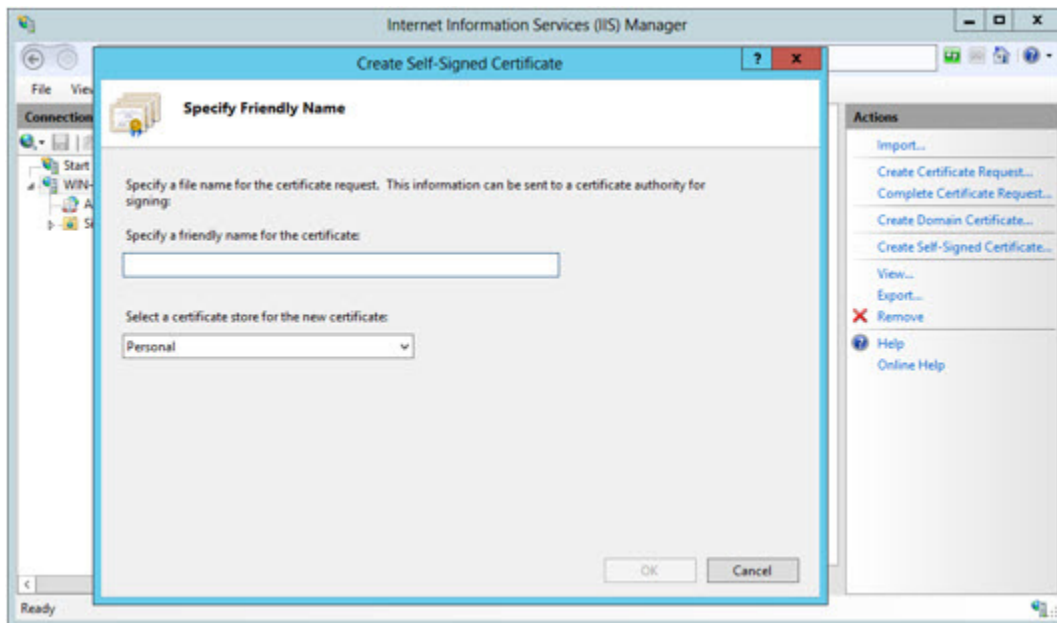
1. Obtain a certificate by first opening the **Server manager**, clicking on **Tools** (top right), and selecting **Internet Information Services (IIS) Manager** from the drop down. Next, select the Web Server node (WIN-2012 in this case), in the Internet Information Services (IIS) Manager window. Lastly double-click the **Server Certificates** icon, in the **IIS** section.

Figure 28: Server Manager



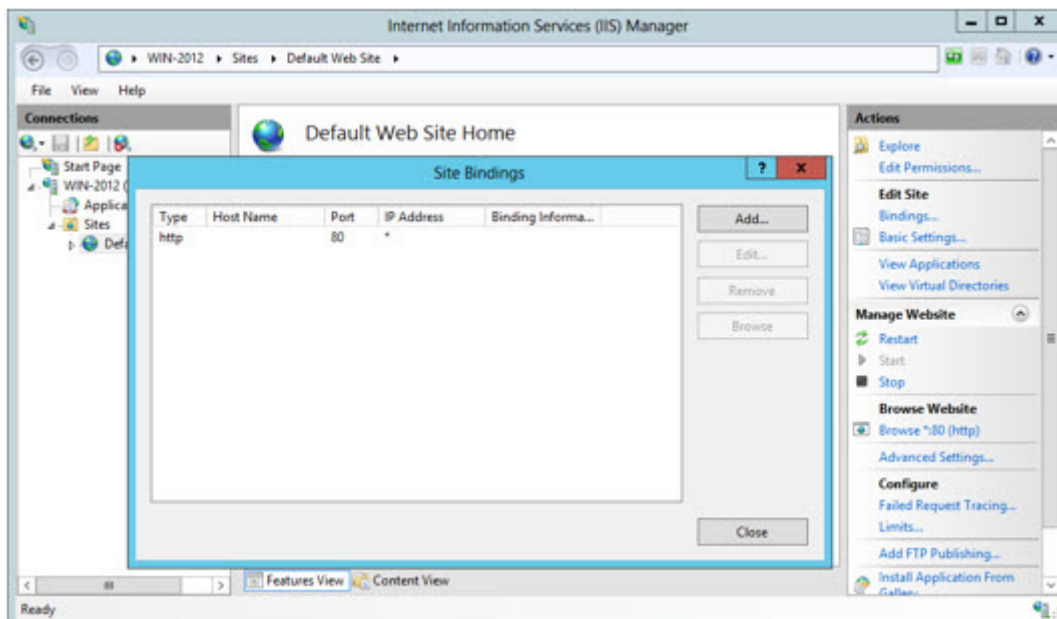
2. If a certificate is needed, then create one by clicking on the **appropriate** link (Create Self-Signed Certificate in this example), under Actions.

Figure 29: Server Certificates



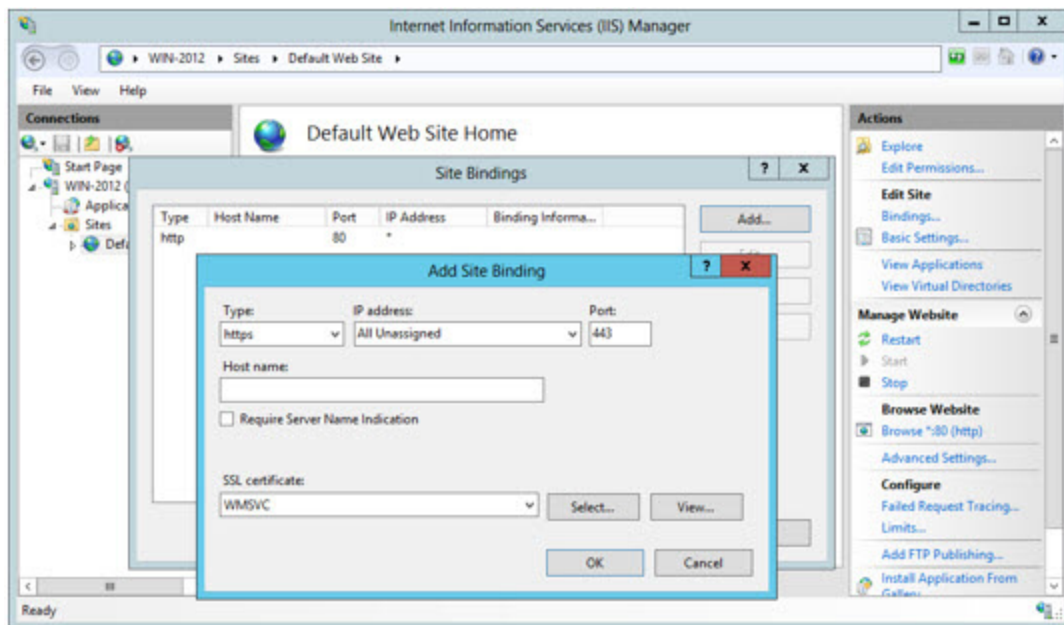
3. When a certificate is available, create an SSL Binding by first expanding **Sites**, selecting **Default Web Site**, clicking the **Binding** link under Actions. A Site Binding window will then display.

Figure 30: Site Bindings



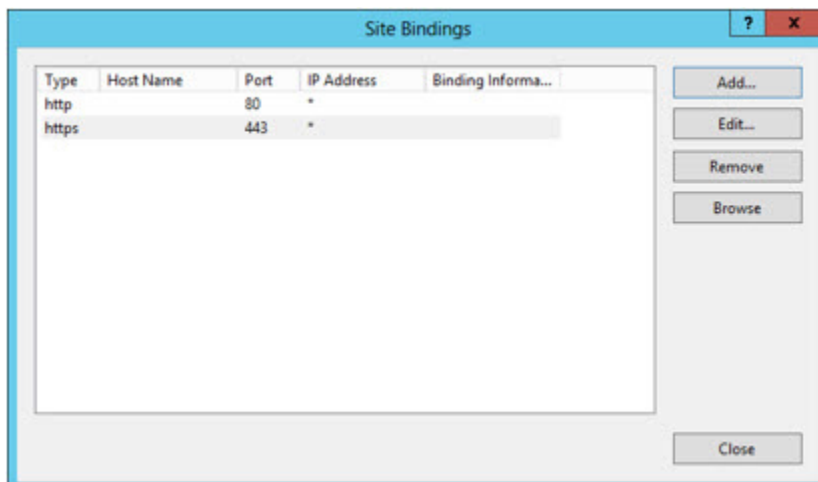
4. In the Site Binding window, click **Add** (which will result in the Add Site Binding window). In the Add Site Binding window, select **https** for Type, select a certificate, a desired port, and click **OK**.

Figure 31: Add Site Binding



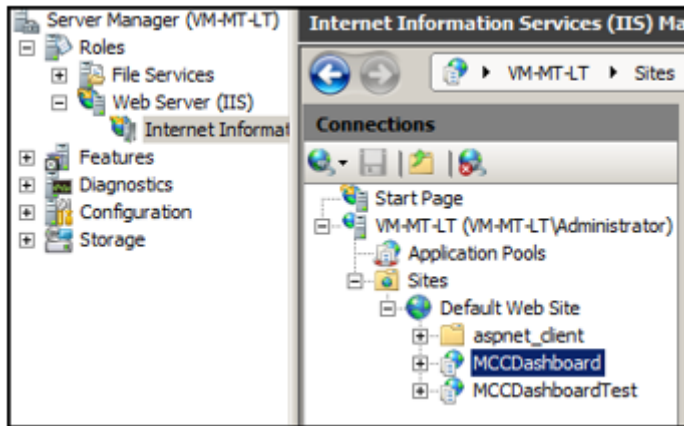
5. Click **Close**.

Figure 32: Site Bindings



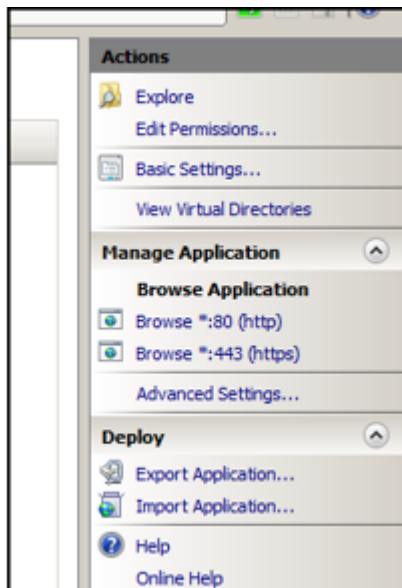
6. To verify the SSL Binding, first check that the Web Server is started. Then under Connections, click/select the Web Site to test (MCCDashboard in this instance).

Figure 33: MCCDashboard Web Site



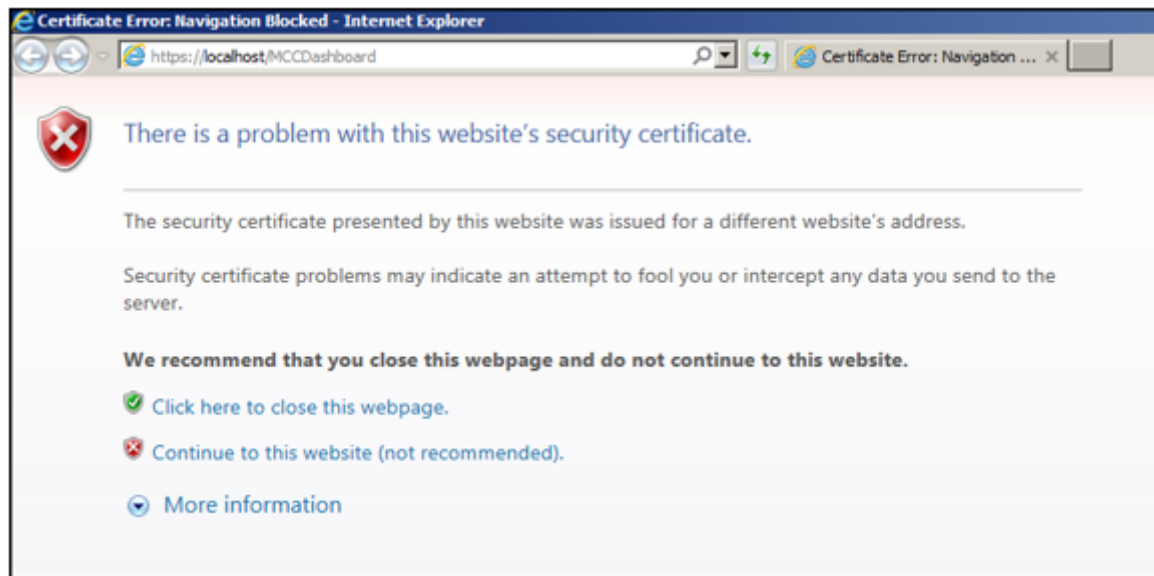
7. Under Actions/Manage Application Web Site, click **Browse *:443 (https)**.

Figure 34: Browse *.443 (https)



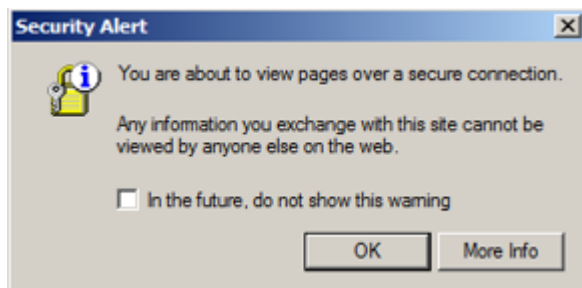
8. This following Certificate Error will occur if the Web Server is not a trusted Certificate Authority. Click the **Continue to this website (not recommended)** link.

Figure 35: Certificate Error



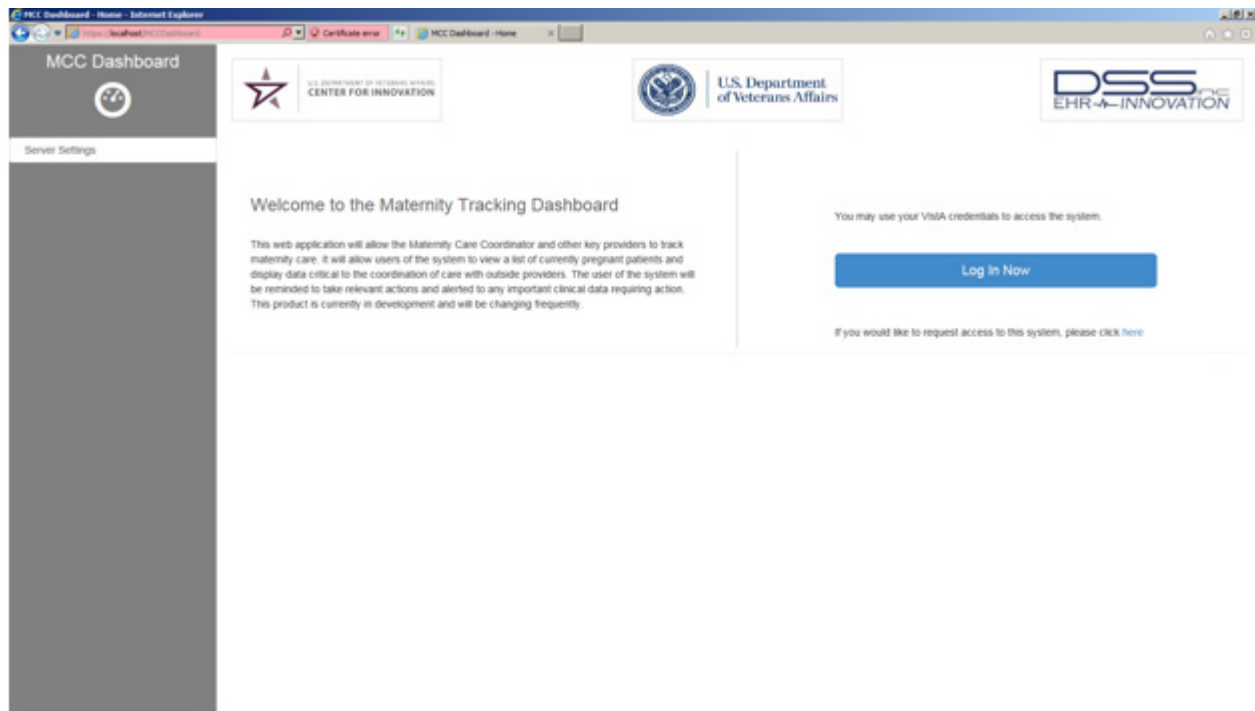
9. Click **OK** on the Security Alert, should this message occur.

Figure 36: Security Alert



10. Log on to the Maternity Tracker Web Page.

Figure 37: Maternity Tracker Web Page



Web.config Configuration

Various configuration items are handled by editing the web.config file located in the root of the installation folder (C:\inetpub\wwwroot\MCCDashboard - for example). There are two methods to perform the configuration - Server Manager and Manual.

The following is the list of the common Items (Key/, Value) that \require Configuration:

- key="vistaServer" value="localhost"
- key="vistaListenerPort" value="9000"
- key="cdaExportFolder" value="c:\cda\outgoing"
- key="Text4BabyApiPassword" value="XXXXXX"

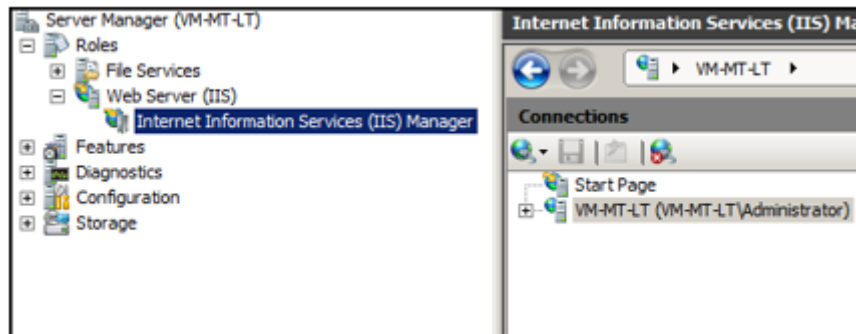
Note: Text4baby will be discussed in the **Manual Configuration** below.

Note: Just the update of the **cdaExportFolder** key will be illustrated here, as this is a known value.

Server Manager Configuration

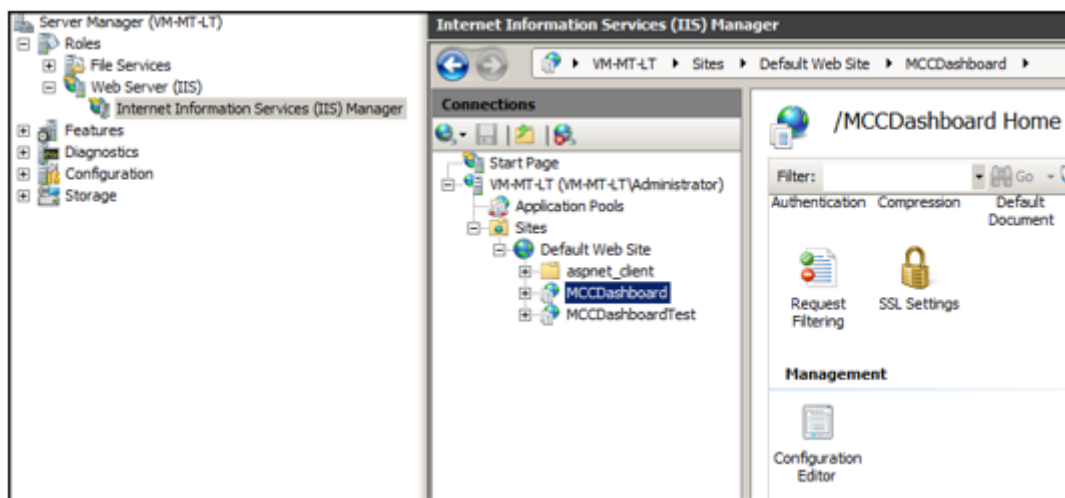
1. Open the **Server Manager**. Expand **Roles** followed by **Web Server (IIS)**, and click the **Internet Information Services (IIS) Manager**.

Figure 38: Server Manager Configuration



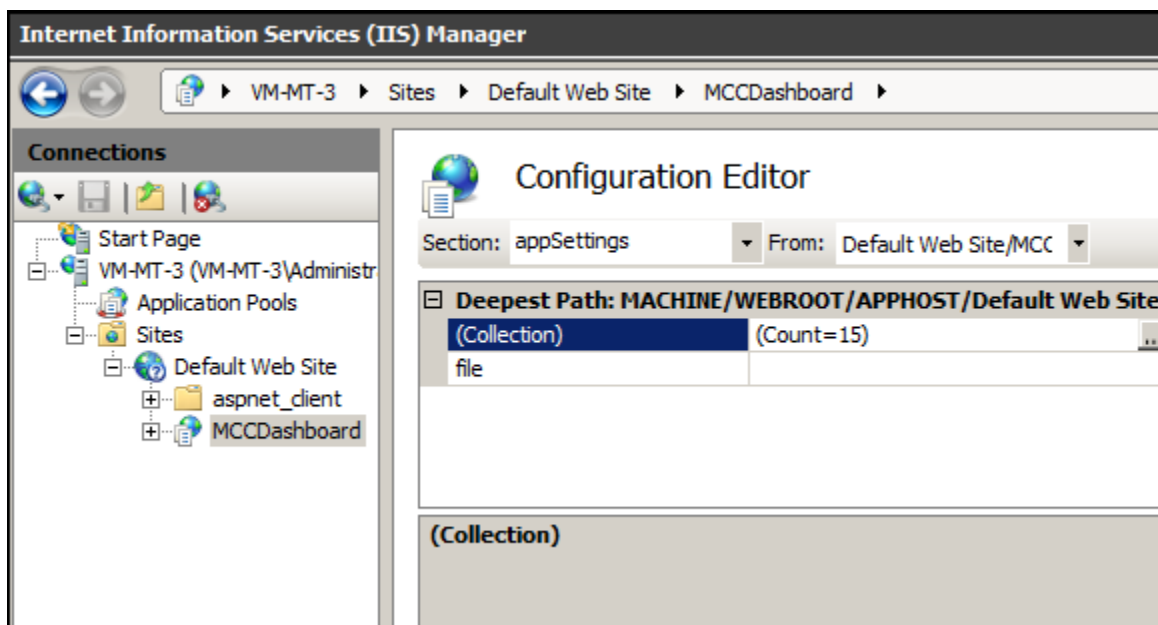
2. In the Internet Information Services (IIS) Manager pane, in the Connections section, expand the **Web Server node** (VM-MT-LT in this case), followed by **Sites**, **Default Web Site**, and finally the specific Web Site: **MCCDashboard**.

Figure 39: Server Manager



3. In the /MCCDashboard Home pane (see above), double-click the **Configuration Editor**, in the Management section. The /MCCDashboard Home pane then becomes the Configuration Editor pane.

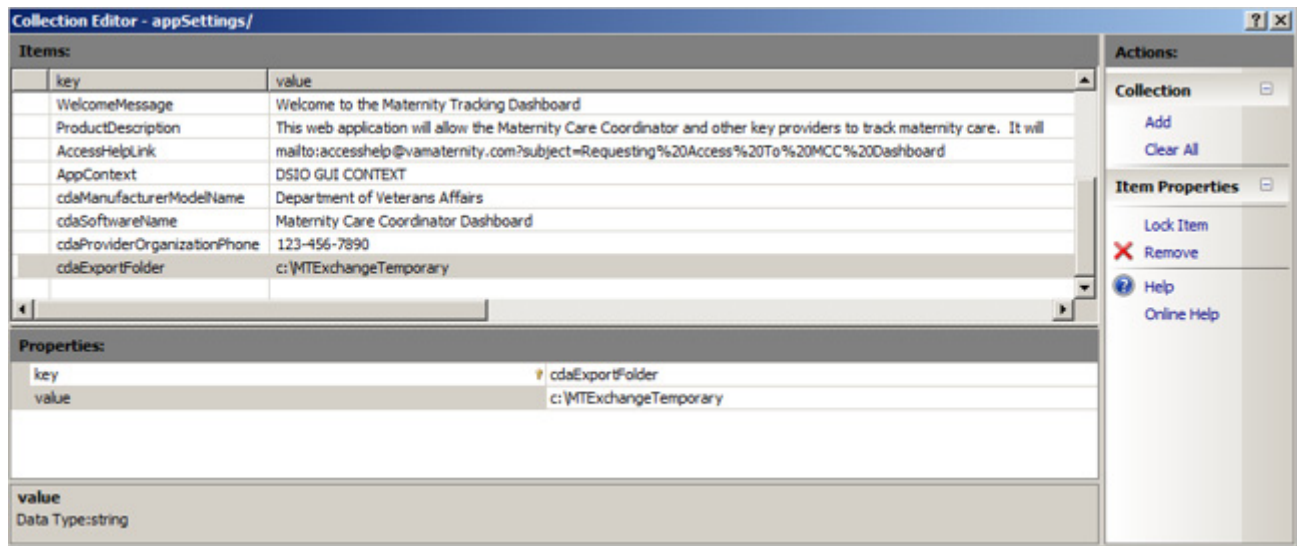
Figure 40: Internet Information Services (IIS) Manager



4. By placing the cursor at the end of the line (see above), the ellipsis (“...”) will appear. Clicking the ellipsis (“...”), then renders the **Collection Editor - appSettings/** window.
5. By clicking any of the keys, the corresponding key - value pair display in the lower portion of the screen, allowing modifications.

Note: Changes are made as the field is modified.

Figure 41: Collection Editor - appSettings/



6. Close the window by clicking the X in the top right.

Manual Configuration

Navigate to C:\inetpub\wwwroot\MCCDashboard, or a corresponding folder to find the web.config file. Here the following data elements should be examined for correctness, and modified if necessary. Each of which can be found in the following section of the config (xml) file.

Figure 42: Web.config

```
<appSettings>
  <add key="webpages:Version" value="2.0.0.0" />
  <add key="webpages:Enabled" value="false" />
  <add key="PreserveLoginUrl" value="true" />
  <add key="ClientValidationEnabled" value="false" />
  <add key="UnobtrusiveJavaScriptEnabled" value="false" />
  <add key="vistaServer" value="localhost" />
  <add key="vistaListenerPort" value="9000" />
  <add key="WelcomeMessage" value="Welcome to the Maternity Tracking Dashboard" />
  <add key="ProductDescription" value="This web application will allow the Maternity Care Coordinator and other key providers to track maternity care." />
  <add key="AccessHelpLink" value="mailto:accesshelp@vamaternity.com?subject=Requesting%20Access%20To%20MCC%20Dashboard" />
  <add key="AppContext" value="DSIO GUI CONTEXT" />
  <add key="cdaManufacturerModelName" value="Department of Veterans Affairs" />
  <add key="cdaSoftwareName" value="Maternity Care Coordinator Dashboard" />
  <add key="cdaProviderOrganizationPhone" value="123-456-7890" />
  <add key="cdaExportFolder" value="d:\MTExchangeTemporary" />

  <!-- TEST URL -->
  <!--<add key="Text4BabyApiUserName" value="DSSincAPI" />
  <add key="Text4BabyApiPassword" value="eKJ4MosmJy7R" />-->

  <!-- PRODUCTION URL -->
  <add key="Text4BabyApiUserName" value="DSSincAPI"/>
  <add key="Text4BabyApiPassword" value="dK8dAxjW"/>

  <add key="Text4BabyApiReferringUrl" value="DSS Maternity Tracker" />
  <add key="Text4BabyApiApplicationId" value="22" />
</appSettings>
```

- VistA Server Settings
 - **vistaServer** - The name of the vista server name
 - **vistaListeningPort** - The port number
- Home Page Settings
 - **WelcomeMessage** - The exact text of the welcome message
 - **ProductDescription** - Text of the product description
 - **AccessHelpLink** - A link pointing to help getting access to the application
- **AppContext** - Default is DSIO GUI CONTEXT
- CDA Settings
 - **cdaManufacturerModelName** - The manufacturer of the software
 - **cdaSoftwareName** - The name of the software
 - **cdaProviderOrganizationPhone** - The central phone number for the local VA hospital
- Provide for folder encryption
 - In the web.config file, locate the entry with a key equal to "cdaExportFolder". Change the associated value from "c:\cda\outgoing" to "X:\MTExchangeTemporary", such that the entry equals (as illustrated in figure 42):

```
<add key="cdaExportFolder" value="d:\MTExchangeTemporary" />
```

- Text4baby
 - **Text4BabyApiPassword**
 The MCC Dashboard includes integration with Text4Baby, a free service for pregnant women. The service is configured inside the web.config file. The dashboard calls the API (hosted by Text4Baby) to register a patient for the service. There is an API available for both test and production (live) environments. When in **test**, set the values in the configuration file to the test URL, user name, and password. When **production**, the application should be set to use the production URL, user name, and password. Once set up in the web.config file all interactions with Text4Baby through the dashboard will use those settings.

Note: As illustrated in figure 42 – **production** (PRODUCTION URL) is active, and thus the TEST URL is commented out.

Rollback Instructions

In the event that Maternity Tracker is required to be shut down or rolled back, the following sections can be disabled:

- User's access to Maternity Tracker
- Scheduled Task
- Triggering of consults, labs & problems
- Dashboard's access to VistA

User's Access to Maternity Tracker

Users given access to the **DSIO GUI CONTEXT** secondary menu options should have this removed.

Scheduled Task

Remove the setting for **RESCHEDULING FREQUENCY** (see Schedule the Task to PUSH Discreet Data section for usage).

Triggering of Consults, Labs & Problems

For each of the follow three items, set the parameter to **NO** to prevent patients from being flagged, for configured issues:

- **DSIO EVAL CONSULTS NOW**
- **DSIO EVAL LABS NOW**
- **DSIO EVAL PROBLEMS NOW**

An example for **DSIO EVAL CONSULTS NOW** is displayed below.

VAH>**D ^XPAREDIT**

Press <Enter>

--- Edit Parameter Values ---

Select PARAMETER DEFINITION NAME: **DSIO**

1. **DSIO EVAL CONSULTS NOW** Evaluate consults for maternity
2. **DSIO EVAL LABS NOW** Evaluate labs for maternity
3. **DSIO EVAL PROBLEMS NOW** Evaluate problems for maternity.
4. **DSIO OCNT LOCATIONDSIO oCNT Network Address**

CHOOSE 1-4: **1 DSIO EVAL CONSULTS NOW** Evaluate consults for maternity

---- Setting **DSIO EVAL CONSULTS NOW** for System: **SMA.FO-TEST.MED.VA.GOV** ----
EVALUATE CONSULTS DURING PATIENT SEARCH: NO

Note: Each of the triggers for Consults, Labs and Problems, set INACTIVE to **YES**:

INACTIVE: **YES** (See [Configure Triggering](#) section for usage)

Dashboard's access to VistA

- Similar to configuration of the **key="cdaExportFolder"** - in the previous Web.config Configuration section – the **value's** for **key="vistaServer"** and **key="vistaListenerPort"** should be set to **null**.